



UNIVERSITY OF FREIBURG

DEPARTMENT OF COMPUTER SCIENCE
CHAIR OF COMMUNICATION SYSTEMS

MASTER THESIS

IMSI CATCHER DETECTION

Author:
Thomas Mayer

June 5, 2012

Supervisor:
Prof. Dr. Schneider
Dennis Wehrle
Konrad Meier

Declaration

I hereby declare that this thesis has been composed by me without any assistance and I have not used any sources or tools other than those cited. Furthermore, I declare that I have acknowledged the work of others by providing detailed references. I also declare that this thesis or parts of it have not been accepted in any other previous application for a degree, project or examination.

Freiburg, June 5, 2012

Acknowledgements:

Abstract:

List of Figures

2.1.	Growth of mobile GSM subscriptions. Compiled from [10, 14, 13]	6
2.2.	The main components of a GSM network.	8
2.3.	Authentication procedure.	13
2.4.	Mapping of functional entities on the 900 MHz band.	15
2.5.	Theoretical arrangement of radio cells compared to a realistic alignment. Cells with the same number share the same frequency [10].	17
2.6.	Ciphering procedure for one frame of voice data. Adopted from [25].	19
2.7.	The combination of FDMA and TDMA.	21
2.8.	Hierarchical composition of the different frames.	22
2.9.	Structural Comparison of different Burst types. After [10].	22
2.10.	Mapping of virtual channels on time slots.	24
2.11.	A commercial catcher by Rhode & Schwarz [12] and a self built catcher introduced at Defcon 2010 [27].	28
2.12.	IMSI catching procedure. Adopted and simplified from [11].	29
2.13.	Takeover attack of an IMSI catcher on a base station.	31
3.1.	Circuit board of the Motorola C123 with its components [22].	38
3.2.	Interaction of the OsmocomBB components with the ICDS software.	39
3.3.	System Information 2 Message [17].	41
3.4.	Procedure taken when the network has a call/text waiting for a passive subscriber.	43
3.5.	Some base stations and their neighbourhood connections at the Faculty of Engineering.	47
3.6.	Comparison between a normal neighbourhood subgraph and a tainted one.	48
3.7.	System architecture of the ICDS. The arrows indicate the flow of data.	52
3.8.	Configuration Dictionary in the settings file.	53
3.9.	The ICDS main window.	55
3.10.	Dialogs for different settings.	58
3.11.	The User Mode window.	60
4.1.	Scan durations for the sample data sets.	64
4.2.	Open Source IMSI Catcher (left) with USRP (black) and external clock (blue) and the ICDS (right) with the Motorola C123 connected.	67
4.3.	Excerpt of a <code>OpenBTS.conf</code>	68

5.1. ICDS decision finding process outlined.	74
B.1. Serial cable schematics.	85
D.1. System Information 1 Message	94
D.2. System Information 2 Message	95
D.3. System Information 3 Message	96
D.4. System Information 4 Message	97

List of Tables

2.1.	Subset of data stored on a SIM card. Adopted from [17]	10
2.2.	Mobile Country and Network Codes. (R) denotes that the MCC is reserved but not operational as of yet, whereas (T) denotes a operational test network.	11
2.3.	Frequencies in the different bands [25].	16
3.1.	Technical specifications for the Motorola C123.	37
3.2.	Type Codes and the corresponding System Information Types [10].	40
3.3.	Configuration Rules implemented inside the ICDS.	44
3.4.	Context Rules implemented inside the ICDS.	45
3.5.	Database Rules implemented inside the ICDS.	48
3.6.	Scan Rules implemented inside the ICDS.	49
4.1.	Key values of the data sets used for performance tests.	63
4.2.	Coverage for Google Mobile Maps and OpenCellID on the data sets with the time needed in s for fetching the information.	65
4.3.	Number of Pagings and Immediate Assignments (per 10 s) for the four German providers at different locations.	66
4.4.	Erroneous configurations for the IMSI catcher.	69
4.5.	Results obtained testing the <i>rx</i> and <i>LAC Change rules</i>	70
4.6.	Results of the long-term evaluation.	71
4.7.	Consistent parameter configurations in the Freiburg area for the four German providers.	71
A.1.	Interface found in the GSM network.	81
A.2.	Possible mappings of channels onto Multiframes	82
E.1.	Configurations used for the <i>rx/LAC Change Rules</i> test.	99

Contents

1. Introduction	1
1.1. Motivation	1
1.2. Structure	2
1.3. Disclaimer	2
1.4. On Typesetting	3
2. GSM	5
2.1. A Historical Perspective	5
2.2. The GSM Network	7
2.2.1. Mobile Station	8
2.2.2. Network Subsystem	11
2.2.3. Base Station Subsystem	15
2.3. The U_m Interface	20
2.3.1. Radio Transmission	20
2.3.2. Logical Channels	24
2.3.3. Layers	26
2.4. IMSI-Catcher	27
2.4.1. Mode of Operation	28
2.4.2. Law Situation in Germany	32
3. IMSI Catcher Detection System	35
3.1. Framework and Hardware	35
3.1.1. OsmocomBB	35
3.1.2. Motorola C123	37
3.1.3. OsmocomBB and ICDS	38
3.2. Procedure	39
3.2.1. Information Gathering	40
3.2.2. Information Evaluation	43
3.2.3. Base Station Evaluation	51
3.3. Implementation	51
3.3.1. Architecture	52
3.3.2. Configuration	53
3.3.3. Graphical User Interface	54

3.3.4. Usage	57
3.4. Related Projects	61
4. Evaluation	63
4.1. Performance Evaluation	63
4.1.1. Scan Duration	64
4.1.2. Cell ID Databases	65
4.1.3. PCH Scans	65
4.2. IMSI Catcher Detection	66
4.2.1. Open Source IMSI Catcher	66
4.2.2. Rule Evaluation	68
4.2.3. Long-Term Test	70
4.2.4. Attack Scenarios	70
5. Conclusion	73
5.1. Summary	73
5.2. Future Work	75
Bibliography	77
A. GSM	81
A.1. Interfaces	81
A.2. Channel Combinations	82
B. OsmocomBB	83
B.1. Installation	83
B.2. Usage	84
B.3. Serial Cable Schematics	85
C. IMSI Catcher Detection System	87
C.1. Extentions	87
C.2. Example Configuration	89
D. System Information	93
E. Evaluation Data	99
E.1. Rx and LAC Change Test	99
E.2. Long Term Test	99
Acronyms	101

1. Introduction

1.1. Motivation

Boundless communication for everyone, everywhere, any time. That was the main idea and dream behind the development of the Global System for Mobile Communications (GSM) technology. Considering its reception and growth [10, 14, 13] it can be said that GSM was one of the most successful technologies of the last 30 years. The advent of portable radio equipment and microprocessors in the 80's made mobile phones technologically possible.

From that point on commercialisation started with more and more providers emerging. With more users, security became an ever more important aspect since confidential telephone calls were now made over radio instead of fixed landlines. In 1996 a device was released that took advantage of a security hole in the GSM protocol which enabled it to record phone calls and track users. This device was developed by Rhode & Schwartz and was called IMSI catcher. The name refers to the IMSI number, a unique identification of the user inside the GSM network. It can be obtained by the device by impersonating a base station which is the entry point of the subscriber to the network. By means of a classical man-in-the-middle attack the IMSI catcher lures the subscriber to connect to it and relay the information to a real base station while harvesting the needed information like calls or IMSI numbers invisibly.

This risk is intensified by the fact that several other projects like the Open Source IMSI catcher [30] succeeded in building such an IMSI catcher at a very low cost, using hardware and software that is freely available. With this hardware it is considerably easier to eavesdrop on and thus breach the privacy of a neighbour or record corporate phone calls than it was when only landlines were available.

Up until now countermeasures to IMSI catchers have not been given much attention to since the commercial grade devices were only available to authorities and private abuse was thus not a large issue. This is where this project is aimed at. In this project different ways will be explored on how to identify an IMSI catcher based on its differences to a regular base station. Additionally information of the surrounding area and tracking of different parameters over time is used to isolate suspicious base stations in the perimeter. We develop a toolbox that makes it possible to gather and analyse information from all available base stations in an easy manner, the IMSI Catcher Detection System (ICDS). It is also designed to operate in an end user mode where only a very simplified version of the GUI is presented and an evaluation is yielded of whether it is safe to place a phone

call or not at the moment. The tool operates in a completely passive manner, only on information that is freely broadcasted, never connecting to base stations in question. This way the system itself stays invisible to the base stations and thus potential IMSI catchers while evaluating them.

1.2. Structure

The remainder of this thesis is structured as follows: the second chapter will give an overview of how a GSM network is built up to create a general understanding of the infrastructure in which an IMSI catcher and the detection system are situated. Protocol specifics of the interface on which the two systems operate, the interface between a mobile phone and the base station will be discussed in the second part. The chapter concludes with a description of how an IMSI catcher works and gives an account of what kind of attacks are possible.

In the third chapter, the software framework and hardware is introduced on which the ICDS is built upon. The different procedures used for information gathering and evaluation are also discussed in this chapter based on possible attacks an IMSI catcher can perform as well as the differences in parameters to a valid base station. Finally an explanation of how to set up and operate the system together with some use cases is outlined.

The fourth chapter contains an evaluation of how the system performs in several categories. First some general performance statistics and results on the individual methods used are collected. Afterwards a long-term test over the course of a week is done to examine the false positive and false negative rates of IMSI catcher detection. The chapter ends with two simulated attack scenarios.

In the last chapter, a short summary of the results will be given as well as an outlook of how the system can be extended in several ways.

1.3. Disclaimer

While conducting the practical part of this thesis precautions have been taken not to interrupt or influence radio transmissions made by regular subscribers. The main part of the experiments is passive information gathering which only harvests information that is freely available and thus does not influence regular communication procedures.

The IMSI catcher was configured in a way to not let subscribers connect, therefore it is not interfering with regular connection procedures. Operation of the IMSI catcher was restricted to the ARFCN 877 which is officially registered to the university.

1.4. On Typesetting

To make the thesis more readable a few conventions will be kept throughout this document. Important words or components of the ICDS are printed *emphasised*. Typewriter is used whenever a program or a file name are used in the running text. Code examples can be distinguished by a code listing box that surrounds them.

```
if __name__ == '__main__':  
    print 'Hello ICDS'
```

If a complete command line is given it will be put into a new line and the typewriter font will be used.

```
sudo do_it -t now
```

Generally a lot of acronyms will be used due to the nature of GSM and telephony dialects, where every possible word has an abbreviation associated with it. The first appearance will always be written out followed by the acronym in parenthesis that will be used from that point henceforth. A complete list of all acronyms for reference can be found in the back of the document.

2. GSM

This chapter will give a short overview of some important aspects of GSM networks and protocols. The first section presents a brief historical summary on the evolution of GSM and how it came to be what it is today. In Section 2.2 the system architecture and its components as well as essential protocol basics will be explained important to understand which place in the network an IMSI catcher tries to take over. The U_m interface will be described in detail in Section 2.3 since this is the main source for gathering information from IMSI catchers. Section 2.4 will finally explain how an IMSI catcher works and how it replaces the system components as well as state from a technical and law perspective why these devices have become a threat to all-day privacy.

2.1. A Historical Perspective

The acronym GSM was originally derived from *Group Spéciale Mobile*. This committee was part of the Conférence Européenne des Administrations des Postes et des Télécommunications (CEPT) 1982, with the task of developing a pan-European digital cellular mobile radio standard in the 900 MHz band. In 1986 the frequency range was officially licensed. The foundation of this task group was a direct answer to the development of independent and incompatible analog radio networks during the 80's. Examples of such networks were the C-Netz in Germany, the Total Access Communication System (TACS) in the UK and Northern Telecommunication (NMT) in Scandinavia.

In February 1987 the committee submitted the basic parameters of GSM. Not after, in September, the Memorandum of Understanding (MoU) was signed in Copenhagen by 15 members of 13 countries that were dedicated to deploy GSM in their respective countries. This agreement was the foundation for allowing international operation of mobile stations using the standard interfaces agreed upon earlier that year. CEPT itself was around since 1959 and its members founded the European Communication Standards Institute (ETSI) in 1988. In the same year the committee submitted the first detailed specification for the new communications standard. The acronym was reinterpreted in 1991 after the committee became a part of the ETSI in 1989 to *Global System for Mobile Communications*. The very same year the specifications for Digital Cellular System 1800 (DCS1800) were submitted. These were essentially the same specifications translated to the 1800 MHz band and the basis for the USA's 1900 MHz band. Under the umbrella of the ETSI, many Sub Technical Committees (STCs) began to work on different aspects of mobile commu-

2. GSM

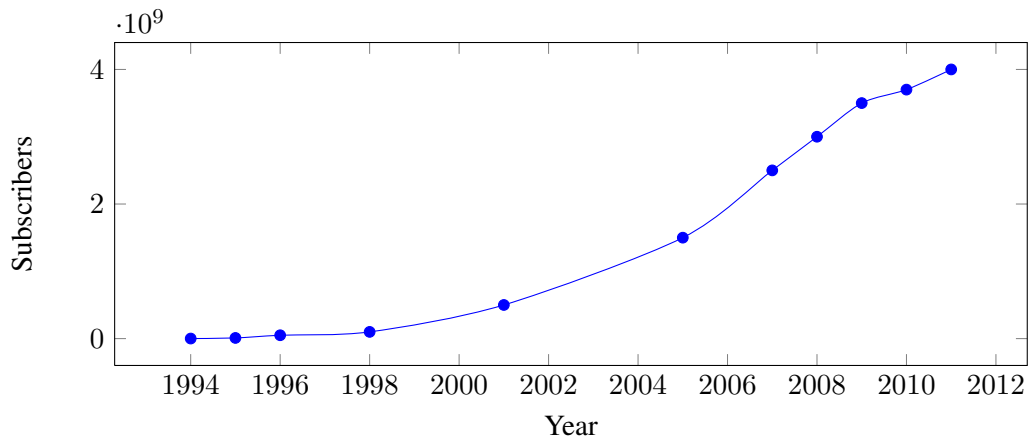


Figure 2.1.: Growth of mobile GSM subscriptions. Compiled from [10, 14, 13]

nication, like network aspects (SMG 03) or security aspects (SMG 10). SMG 05 dealt with future networks and especially with UMTS specifications which eventually became an independent body inside the ETSI.

In 1992 many European countries had operational mobile telephone networks. These networks were a huge success, and as early as 1993 they already counted more than one million subscribers [10]. Also many networks on different frequency bands (900 MHz , 1800 MHz , 1900 MHz) were started outside Europe in countries like the US or Australia with Telstra as the first non European provider. The rapid growth of mobile subscribers worldwide until today can be seen in figure 2.1. Three of the main reasons for this rapid growth are explained by Heine [17] as:

- Liberalisation of the mobile market in Europe which allowed for competition and thus resulting in lower prices and enhanced development.
- Expertise within the Groupe Spéciale Mobile and their collaboration with industry.
- The lack of competitive technologies.

In 1998 the Third Generation Partnership Project (3GPP) was founded by five organisational partners with the goal of standardisation of mobile communications with focus on developing specifications for a third generation mobile radio system. These partners were the Association of Radio Industries and Businesses (ARIB), the ETSI, the Alliance for Telecommunications Industry Solutions (ATIS), the Telecommunications Technology Association (TTA) and the Telecommunications Technology Committee (TTC). The focus was later expanded in the light of the *International Mobile Communications-2000*-project [9] by the International Telecommunication Union (ITU) to:

- Development and maintenance of GSM and General Packet Radio Service (GPRS), including Enhanced Data Rates for GSM Evolution (EDGE) which are standards for high speed packet oriented data transmission via GSM.
- Development of a third generation mobile communication system on the basis of the old GSM protocol. This standard is called Universal Mobile Telecommunications System (UMTS).
- An IP based multimedia system.

Up to now the 3GPP has enhanced mobile standards. In 2005 the first High Speed Downlink Packet Access (HSDPA) network went online. HSDPA [18] is a protocol that enables mobile users to download data with speeds up to 84 MBit/s since release 9. High Speed Uplink Packet Access (HSUPA) [19] is a related protocol in the High Speed Packet Access (HSPA) family that provides similar functionality for uploading data. These and other specification are published on the 3GPP website¹.

2.2. The GSM Network

The GSM network is a distributed, star shaped network that is built on top of existing telephony infrastructure to additionally connect mobile users. The telephony network is not only used to connect mobile subscribers to landline phones but also to connect the different components of the mobile network. The main components of a GSM network can be seen in Figure 2.2 as well as the interfaces that are used to connect them. There are different notions of how to distribute these components into functional entities. In the following the classification by Sauter [25] will be used. It describes the main parts as:

- Basestation Subsystem (BSS): this part is also called radio network and contains all the technology necessary for connecting mobile subscribers to the telephone network and routing their calls. These calls originate from the Mobile Station (MS) that will be explained in Section 2.2.1, and travel over the air interface to the receiver stations for further processing. The air interface or U_m interface will be explained in Section 2.3, whereas the rest of the subsystem will be discussed in Section 2.2.3.
- Network Subsystem (NSS): the core network, as it is sometimes called, consists of several entities that are used to establish and route a connection. This is not only limited to calls within the provider's network but also into other providers' networks or the Public Standard Telephone Network (PSTN). The databases that contain subscriber information and location information for connected users are located here.

¹3GPP - Specification Groups, <http://www.3gpp.org/> [Online; Accessed 04.2012]

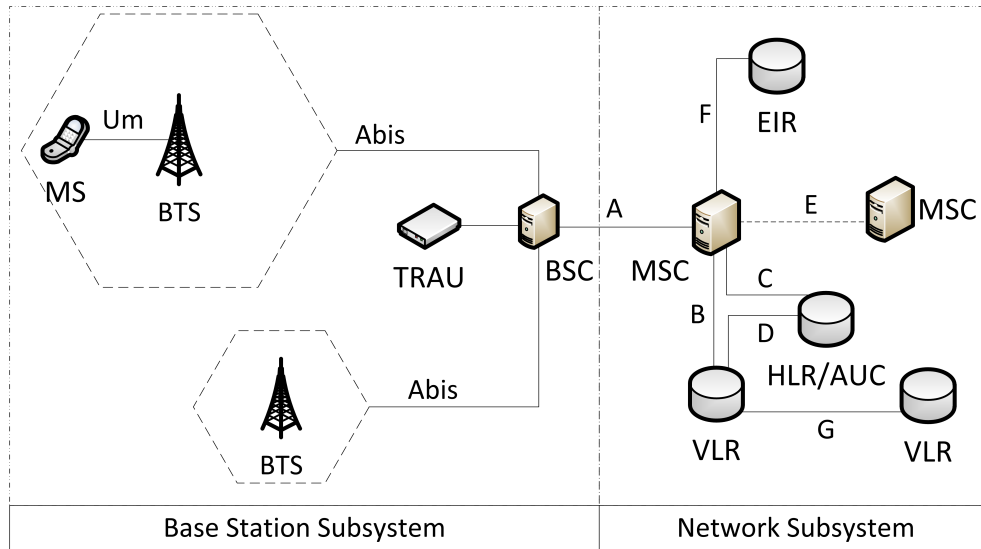


Figure 2.2.: The main components of a GSM network.

- Intelligent Network Subsystem (IN): this part of the network augments the core network with value-added service (VAS) [28]. In order to provide extra functionality the IN consists of several Service Control Point (SCP) databases. Some of the most widely used services are in fact services of the IN and not core services. Examples are prepaid cards, home areas¹ or telephone number portability.

Other sources define the Operation and Maintenance Subsystem (OMS) [10] or limit the BSS entity to the provider part and define an additional entity for the MS [16, 26]. The system developed in this project works inside the base station subsystem acting the part of a passive, information gathering MS. Therefore the following theory section will focus mainly on this part, including the radio interface between the phone and the base station to establish a basic understanding of how the system is able to passively harvest information.

The NSS will only be discussed as far as it is relevant to understanding how an IMSI catcher operates. Since the IN is not involved in any procedure concerning this project further explanation will be omitted.

2.2.1. Mobile Station

With the advent of portable microprocessors in the 80's mobile phones became technically possible. Advances in technology up to today yielded ever smaller mobile phones

¹This service defines a geographical area, in which lower rates are calculated for mobile calls.

with ever more functionality year by year to a point where not the technology itself was the constraining factor for size but the user interface, e.g. button and display sizes. This trend changed however with the upcoming of so called smart-phones. With weight being the driving factor and not size, resolution and display sizes started to increase again but the devices became ever thinner. What hasn't changed is the basic distinction between Mobile Equipment (ME) and Subscriber Identity Module (SIM), the parts of which a MS consists.

It is hard to deliver a consistent definition for what a ME is. GSM Recommendation 02.07 [4] summarizes the mandatory and optional features of a MS. Some of the most important mandatory features are [17]:

- Dual Tone Multi Frequency (DTMF) signalling capability.
- Short Message Service (SMS) capability.
- The ciphering algorithms A5/1 and A5/2 need to be implemented.
- Display capability for short messages and dialled numbers, as well as available Public Land Mobile Networks (PLMNs).
- A cyphering indicator that shows the user whether encryption is activated on the current connection or not. This feature is disabled in most devices as not to confuse the user.
- Machine fixed International Mobile Equipment Identifier (IMEI). In a strict sense this disqualifies many modern mobile phones since the IMEI is not fixed onto the device itself but is rather part of the software or firmware. Tools like *ZiPhone*¹ for iOS devices², especially iPhone, can change this supposedly unchangeable identifier.

A common way to categorise different phones was to group them by the band they support. However it is more common nowadays that ME supports two bands, three bands or even all four bands. These are called dual-band, tri-band and quad-band devices respectively.

As the name suggests the SIM card is essentially a data storage that holds user specific data. This separation is interesting for the GSM user since it allows him/her to exchange the ME without having to contact the provider. Thus it can be used on different frequency bands and is one of the preconditions for roaming. The SIM card can either be in plug-in format or ID-1 SIM format which is normally used for telephone cards, credit cards or car installed ME. The plug-in format is also called ID-000 and can be found in ISO/IEC 7810 [5].

¹Unlock iPhone 4, Jailbreak iPhone, <http://www.ziphone.org/> [Online; Accessed 04.2012]

²Apple iOS5, <http://www.apple.com/ios/> [Online; Accessed 04.2012]

2. GSM

Parameter	Description
Security Related	
A3/A8	Algorithms required for authentication and generation of the session key
Ki	Secret key
Kc	Session key, generated from a random number and Ki via A8
PIN	Secret numeric password to use the SIM card
PUK	Secret numeric password to unlock the SIM card
Subscriber Data	
IMSI	Subscriber identification
MSISDN	Telephone number
Network Related	
LAI	Identifier of the current location area
TMSI	Temporary IMSI
Home PLMN	Multiple entries to identify the home PLMN

Table 2.1.: Subset of data stored on a SIM card. Adopted from [17]

A subset of other parameters stored on the Electrically Erasable Programmable Read-Only Memory (EEPROM) of the card can be seen in Table 2.1. The most important information stored on a SIM card are the International Mobile Subscriber Identification (IMSI) and the Secret Key (Ki).

This key is used to generate the Ciphering Key (Kc), as will be explained in Section 2.2.2. Most of this data, although not the security relevant Ki and Kc can be read via a USB SIM card reader, which can be bought for around \$10 on the web. Since Ki never leaves the card, Kc has to be dynamically generated on the card. This can be done since the card itself has a microprocessor that manages the security relevant data. Key functions, like running the GSM key algorithm, verifying a Personal Identification Number (PIN) or reading a file can be accessed through the microprocessor via a communication protocol. A brief description of the protocol and functionalities can be found in Sauter's book [25].

The IMSI as described in GSM 23.003 [8] uniquely identifies a subscriber. It has at most 15 digits and is divided into three parts, Mobile Country Code (MCC), Mobile Network Code (MNC) and Mobile Subscriber Identification Number (MSIN) of which only the last part is the personal identification number of the subscriber.

$$\underbrace{262}_{\text{MCC (Germany)}} \underbrace{01}_{\text{MNC (T-Mobile)}} \underbrace{9876543210}_{\text{MSIN}}$$

Country	MCC	Provider	Country	MNC
Germany	262	T-Mobile	Germany	01, 06(R)
France	208	Vodafone	Germany	02, 04(R), 09(R)
USA	310 - 316	E-Plus	Germany	03, 05(R), 77(T)
UK	234 - 235	O ₂	Germany	07, 08(R), 11(R)
Switzerland	228	Orange	France	00, 01, 02
Austria	232	Swisscom	Switzerland	01
Poland	260	A1	Austria	01, 09

Table 2.2.: Mobile Country and Network Codes. (R) denotes that the MCC is reserved but not operational as of yet, whereas (T) denotes a operational test network.

The first two groups together are also called Home Network Identifier (HNI). The three digit MCC describes the country code, the area of domicile of the mobile subscriber. The MNC is an identification number for the home PLMN. It can either have two or three digits depending on the MCC. It is not recommended by the specification and thus not defined to mix two and three digit MNCs for a single MCC. These country codes are assigned by the ITU in ITU E.212 [29]. An excerpt can be found in Table 2.2. The third part, the MSIN is a number consisting of up to ten digits which is used for authenticating the mobile subscriber against the network. MNC and MSIN together are called National Mobile Subscriber Identity (NMSI).

2.2.2. Network Subsystem

The most important task of the Network Subsystem or Network Switching Subsystem is to establish connections and route calls between different locations. This is done by the so called Mobile Switching Center (MSC) that can route a call either to another MSC, into the PSTN or another provider's network. Apart from routing, the NSS also provides the means to administer subscribers inside the network. Facilities to support this task are the Home Location Register (HLR), the Visitor Location Register (VLR) as well as the Authentication Center (AC). These will now be described in further detail. A possible arrangement of these components is displayed in Figure 2.2. The Equipment Identity Register (EIR) shown in the picture can be thought of as a database containing lists whether to allow a particular IMSI access to the network or not.

Mobile Switching Center

The MSC is the component that does the actual routing of calls and therefore is the core component of the NSS. It basically works like any other Integrated Services Digital Network (ISDN) exchange device with additional functionality to manage mobility. Since

2. GSM

the amount of signalling inside a PLMN would be far too much for a single MSC there is one for every Location Area (LA). Amongst others its most important tasks are Call Control (CC) and Mobility Management (MM).

CC entails registration when the subscriber connects to the network as well as routing the calls or text messages from one registered subscriber to another. This routing can include transmission of calls to landlines or to networks of other providers. MSCs that bind the provider's networks to other providers' networks or the PSTN are called Gateway MSCs.

The above part is also true for pure landline switching centres. What sets a mobile switching centre apart from these is called MM. Since the participants can freely move around the network and thus cannot be identified the same way as a fixed landline participant, authentication before using the offered services is important. Another consequence of mobility is that the network has to keep track of where a subscriber is and through which MSC it can be reached. This is done via *Location Updates* which update the current location in the databases for other MSCs to look up. Also during calls if the subscriber leaves the respective service area of the switching centre, the call needs to be transferred without being interrupted. A procedure called *Handover* achieves just that.

For this central role to work it is necessary to be connected to all the other components of the NSS. This is done via different connections called interfaces. A brief description of what the different interfaces in a GSM network are and what their respective function is can be seen in Appendix A.1.

Home Location Register

The HLR is the central database in which all subscriber related data is stored. The entries can be divided into two classes, permanent administrative and temporary data. Part of this administrative data is which services a subscriber has access to and which are prohibited (e.g. roaming in certain networks). The data itself is indexed with the customer's IMSI to which multiple telephone numbers can be registered. Since these Mobile Subscriber Integrated Services Digital Network Numbers (MSISDNs) are independent from the IMSI a subscriber can change his telephone number and thus also move the telephone number along should he / she decide to switch to a new provider. Access to basic services is stored inside the HLR. Examples of such services are the ability to receive and initiate telephone calls, use data services or send text messages. Additional services called Supplementary Services like call forwarding or display of phone numbers during calls can also be set or unset in this database. It is up to the provider if these services are available freely or are bound to a fee. The temporary data enfolds the current VLR and MSC address as well as the Mobile Station Roaming Number (MSRN) which is essentially a temporary location dependent ISDN number.

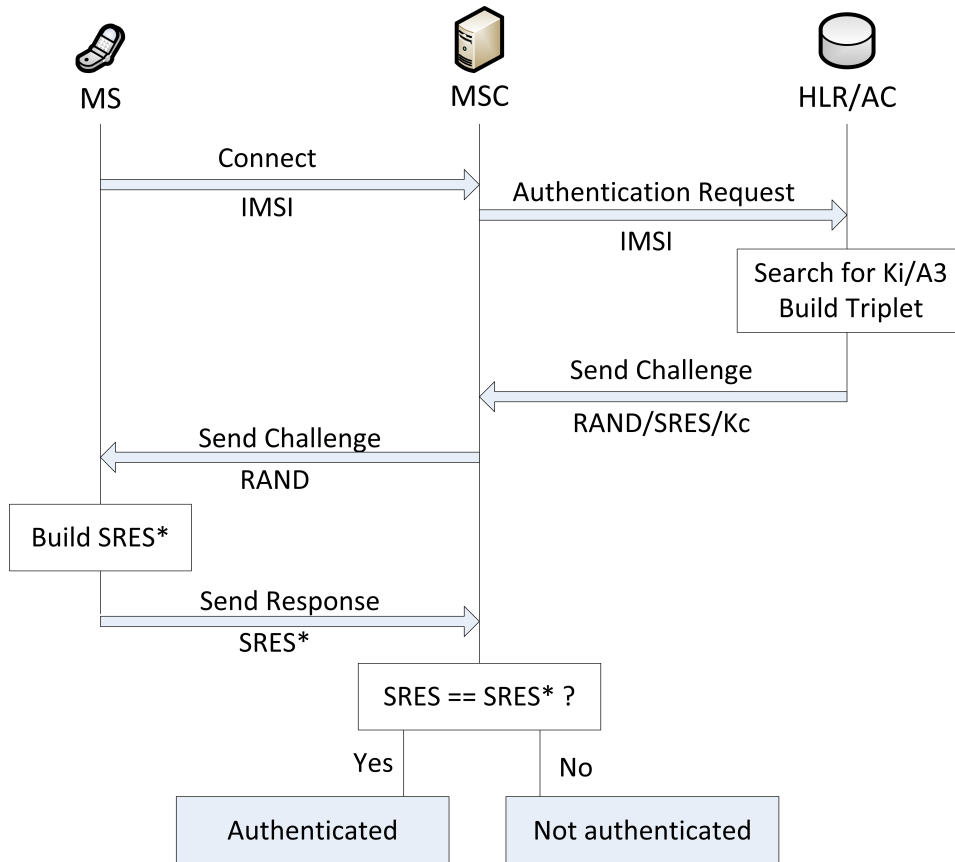


Figure 2.3.: Authentication procedure.

Visitor Location Register

As can be seen in Figure 2.2 there can be multiple VLRs, one for each area in a network. These registers can be seen as caches for data located in the HLR. Thus they are intended to reduce signalling between the MSC and the HLR. Each time a subscriber enters a new area that is serviced by a new MSC, data for this subscriber is transferred to the respective VLR from the central HLR. Such data includes the IMSI and the MSISDN as well as information on which services are available to that particular subscriber. Additionally the subscriber is assigned a one-time IMSI called Temporary IMSI (TMSI) and the LA in which the MS was registered last is transmitted. In this way the regular IMSI is not used and can thus not be harvested by tapping into the radio channel. While it is possible to operate the VLR as a standalone entity, in most cases it is implemented as a software component of the individual MSC.

Authentication Center

The AC is the network component responsible for authenticating mobile subscribers. It is a part of the HLR and the only place apart from the customer's SIM card where the secret key Ki is stored. The authentication is not only done once when the subscriber connects to the network but rather on many occasions e.g. the start of a call or other significant events to avoid misuse by a third party. This authentication routine is a key based challenge-response procedure¹ outlined in Figure 2.3. The steps of the procedure can be summarized as follows:

1. User connects to the network or triggers an event that needs authentication at the MSC. There are two possible scenarios from here on.

In the first case the IMSI is part of the authentication request and the AC starts with searching for the corresponding Ki and authentication algorithm A3. An authentication triplet is built using Ki which consists of the components:

- RAND: a 128 bit random number.
- SRES: a 32 bit number called signed response, which is generated by A3 with Ki and RAND as inputs.
- Kc: the ciphering key that is used to cipher the data during transmission. It is also generated with Ki and RAND using the algorithm A8.

To save signalling bandwidth usually more than one authentication triplet is generated and returned to the MSC by the AC. It should be noted that, since a separate ciphering key Kc is used, the secret key never leaves the AC.

In the second case either a previously generated authentication triplet is used or new authentication triplets are requested.

2. RAND is transmitted to the MS by the MSC where the signed response SRES* is created by the SIM card using A3, Ki and RAND.
3. An authentication response containing SRES* is sent back to the MSC.
4. If SRES and SRES* match, the subscriber is authenticated.

Remarkable properties of this procedure are that by using a ciphering key that is generated by a random number and a secret key, the secret key itself never leaves the AC. Apart from that the use of a random number prevents replay attacks on SRES. It should also be noted that this way of authenticating only works for authenticating the subscriber to the network. It is a one way authentication. The subscriber needs to trust the network. This is the basic design flaw that IMSI catchers abuse. In UMTS networks that flaw

¹A procedure where one party poses a question, a so called challenge and the party to be authenticated has to provide a valid answer.

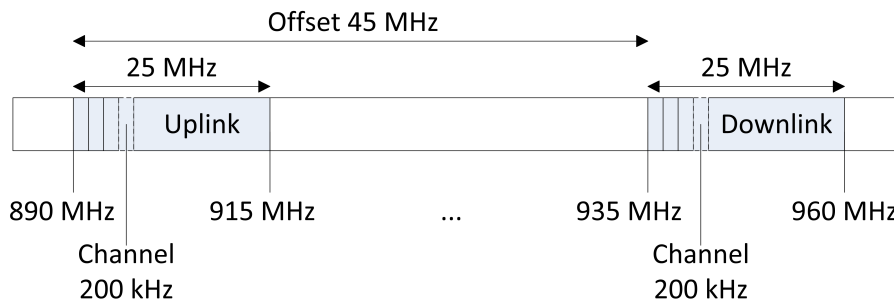


Figure 2.4.: Mapping of functional entities on the 900 MHz band.

was fixed and the authentication procedure was made mutual [25]. However since it will take considerable time until all areas are services by UMTS, phones still have a fall-back mechanism to use GSM if no UMTS station is available.

2.2.3. Base Station Subsystem

The BSS is the part of the network that provides the hard- and software for physically connecting MSs to the provider's network. Its main components are the Base Station Controller (BSC), the Base Station Transceiver (BTS) and the Transcoding Rate and Adaption Unit (TRAU). Connecting a mobile subscriber works via radio which is why this subsystem is sometimes also called the radio network [25]. Inside the radio network of a certain area there is one BSC that connects to multiple BTSs and one more TRAU depending on whether the TRAU is attached to the BSC or to all the BTSs. While the Transceiver station acts as receiver for radio signals the controller coordinates the different receivers and relays the incoming signals to the core network. Since signals inside the core network are transmitted at other rates than in the radio network, rates need to be adapted which is done by the TRAU.

Before discussing the individual components of this subsystem it is important to understand how the frequencies of the radio network are used and what architectural impacts this sparse resource has on the network and the components itself.

Frequencies and the Cellular Principle

A frequency band as shown in Figure 2.4 is distributed into different functional entities. The band is divided into a range for the uplink, the part that is used by the MS to upload data into the network and the downlink, that is utilised by the network to send data back. In the 900 MHz band each of these has a width of 25 MHz. These bands themselves are furthermore divided into channels, each spanning 200 kHz, which accounts for 125 channels on 25 MHz.

2. GSM

Band	ARFCN	Uplink (MHz)	Downlink (MHz)	Offset (MHz)
GSM 900 (Primary)	0-124	890-915	935-960	45
GSM 900 (Extended)	0-124 975-1023	880-915	925-960	45
GSM 1800	512-885	1710-1785	1805-1880	95
GSM 1900 (North America)	512-810	1850-1910	1930-1990	80
GSM 850 (North America)	128-251	824-849	869-894	45

Table 2.3.: Frequencies in the different bands [25].

Each of which is identified by its Absolute Radio Frequency Number (ARFCN). This is a simple numbering scheme, given to those 200 kHz channels. The frequencies and ARFCNs are connected as follows:

$$F_{\text{Uplink}} = \text{Start}_{\text{Band}} + 0.2 \cdot (\text{ARFCN} - (\text{Start}_{\text{ARFCN}} - 1)) \quad (2.1)$$

$$F_{\text{Downlink}} = F_{\text{Uplink}} + \text{Offset}_{\text{Band}} \quad (2.2)$$

In case of the 900 MHz Band this would be:

$$F_{\text{Uplink}} = 890 + 0.2 \cdot (\text{ARFCN} - (1 - 1)) \quad (2.3)$$

$$= 890 + 0.2 \cdot \text{ARFCN} \quad (2.4)$$

$$F_{\text{Downlink}} = F_{\text{Uplink}} + 45 \quad (2.5)$$

For other bands the numbers differ and can be seen in Table 2.3 along with their respective ARFCN numbers but the functionality is the same.

An additional method called time multiplexing which will be explained in further detail in Section 2.3, makes it possible to map $125 \cdot 8 = 1000$ channels that could be used for voice transmission onto that band. Some of these channels need to be used for signalling. Even though the number by itself seems high it would never suffice to service a large urban area. This is one of the reasons why another frequency band in the 1800 MHz range has been opened with 75 MHz up- and downlink supporting 375 channels. That by itself would also never suffice to service the huge number of subscribers therefore the GSM network like any other modern mobile radio network is based on a cellular architecture which makes it possible to reuse frequencies. The range of one receiver station is drastically reduced to service only a small area. This is called the cell of the BTS which in theory can be approximated by a hexagon, each of which has its own Cell Identities (CIDs). Each of these cells is assigned a different frequency to avoid

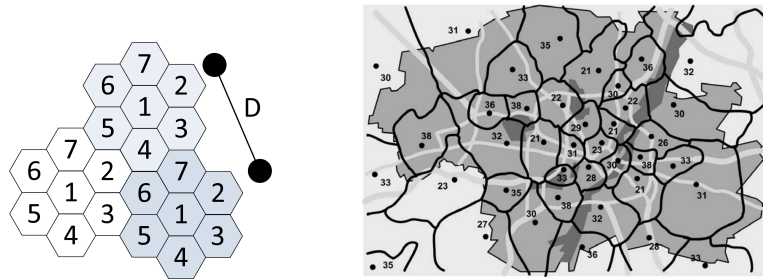


Figure 2.5.: Theoretical arrangement of radio cells compared to a realistic alignment. Cells with the same number share the same frequency [10].

interference. However after a certain distance, *frequency reuse distance* D , is covered the exact same frequency can be used again by another BTS. D is chosen large enough so that interference doesn't have an impact on overall call quality. Figure 2.5 shows such an arrangement. Also a comparison with realistic cells can be seen which differ in their appearance from the optimized hexagon model. The borders are blurred because of interference, reflection- and shadowing effects and cells in the more urban areas are smaller than cells on the countryside, where the density of subscribers is less and thus can be handled by fewer BTSs. The band has been divided into seven frequencies which are only reused (cells with the same number) after distance D is covered. For an arbitrary division of the frequency band into k partitions and a cell radius of R geometric derivations from the hexagon model yield for the frequency reuse distance D [10]:

$$D = R \cdot \sqrt{3k} \quad (2.6)$$

This procedure raises the number of effectively usable by a large factor. However certain disadvantages come with this procedure as well [17]. Increasing the amount of receivers automatically increases the cost of infrastructure for the provider. Due to the nature of the mobility of subscribers this increases the amount of Handovers needed since it is more likely that a subscriber leaves a small cell during an active call. These inflict increased signalling load on the network itself.

Base Transceiver Station

They are also called base stations and are the entry points to the network for subscribers. Theoretically a BTS can serve a cell of 35 km radius however this is decreased by interference, reflection- and shadowing effects. Also this is the theoretical limit for a cell on the 900 MHz band. A 1800 MHz cell has a lower coverage since the signal falloff is greater due to the shorter wavelength. The limiting factor here are the number of subscribers itself. A single station can only serve a limited number of users which yields a

radius as low as 100 m for a single BTS in urban housing areas [25] with high population density. On the countryside where population is less dense the constraining factor can also be transmission power of the ME. Therefore cells with a radius of above 15 km are seldom seen.

BTSs and their corresponding cells can have different configurations depending on load or morph structure of the surroundings. In a *standard configuration* every base station has its own CID, it is a one to one mapping of cells to BTS. This is a cost effective way of providing service to a rural or sparse settled area since only one BTS is used to cover a large area. For urban, densely settled areas the *sectorised configuration* has become the de facto standard. The main idea is to not have a 360° coverage for a base station handling a cell but rather split the cell in multiple sectors, each with its own BTS covering 120° for example. This way the amount of subscribers in the cell will be divided over three BTS instead of one in a standard configuration.

Base Station Controller

The BSC is the central unit in the BSS. It can be compared to a digital exchange in a standard telephone network with additional mobile extensions. The design idea was to remove all radio related load from the MSC into the radio subsystem. Therefore a BSC manages the multitude of BTSs in the BSS.

First and foremost it is a switching centre. This means it has to switch incoming traffic channels from the MSC over the A-interface to channels on the outgoing A_{bis}-interface which leads over the BTS and thus the air interface to different MSs. As a result the initialisation and maintenance of signalling and voice channels are its main tasks. What channels are and how they are established is explained in Section 2.3.2. For the sake of functional explanation of the BSC it will suffice to regard channels as a communication line for a particular purpose like receiving or sending voice data or for sending broadcast information. Due to the nature of a mobile network certain other tasks have to be performed here as well, such as Handovers and power management [25].

A *signalling channel* is needed when a subscriber wants to start a call or send a text message. The MS sends a channel request message to the BSC which needs to check if any Standalone Dedicated Control Channels (SDCCHs) are free. If there are free channels, one of those channels is activated via the BTS and an Immediate Assignment Message (IA) is sent via the Access Grant Channel (AGCH) containing the number of the assigned channel. From this point on the MS can send data on the assigned channel that reach the MSC. For incoming calls a prior step has to be taken. The MSC sends a message to the BSC that contains the IMSI, TMSI and LA of the subscriber that is being called or texted. This message is forwarded to and broadcasted by all cells in that LA on the Paging Channel (PCH). As soon as this message arrives at the respective MS it requests a channel with the procedure outlined above.

After a signalling channel is found that way, a *voice channel* can be initialised. The

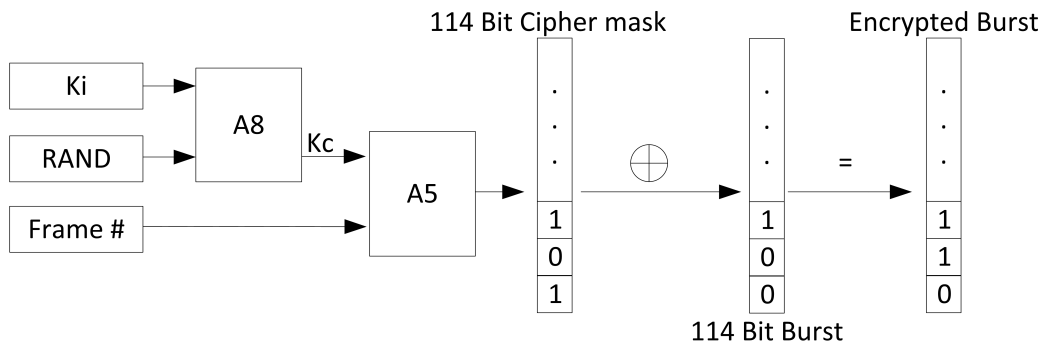


Figure 2.6.: Cipherng procedure for one frame of voice data. Adopted from [25].

MSC sends an assignment request message to the BSC after the start of the call has been determined on the previously assigned SDCCH between the MSC and the MS. A free Traffic Channel (TCH) is assigned and the MS can tune in to this channel and send an acknowledgement to the BSC, which in turn sends an acknowledgement that the assignment has been completed to the MS and the MSC.

Since the voice data is sensitive it is encrypted before it is sent to the NSS. Voice data is a continuous stream originating at the mobile phone and accordingly has to be encrypted using a stream cipher. The stream cipher key K_c is generated by the authentication centre. It is generated by the A8 algorithm on the SIM card with a random number (RAND) and the secret key K_i as input. Since the transmission of voice data is split into frames it suffices to encode the data on a per frame basis. K_c and the current frame number are the inputs for the algorithm A5 which generates a 114 bit cipherng sequence that can be XORed with the frame. This sequence changes every frame since it uses the current frame number as input. The complete procedure is outlined in Figure 2.6. Some strong cipherng algorithms are not permitted in certain countries so there is a variety of algorithms called A5/0, A5/1 and A5/2 from which one needs to be chosen upon connecting to the network. However the encryption is only optional and not mandatory, the use of A5/0 indicates that no encryption is used. If the network does not offer such encryption, the ME sends its data unencrypted, without giving notice to the user in most cases. A cipherng indicator is part of most mobile phones, but on most models it is disabled by the operator to not confuse the customers. The other weakness is the locality of encryption. The procedure only affects the transmission from the ME to the BTS, everything after that is unencrypted voice data. This is especially a problem when providers use point-to-point radio systems to connect their base stations to the MSC.

A *Handover* is necessary when a subscriber leaves the area of a cell and needs to be assigned to another one or if the reception of the current cell at the subscriber's end is far worse than those of neighbouring cells. A Handover takes place during an active call

therefore first of all a TCH in the target cell has to be activated. Once this is done the new cell address and frequency is sent to the MS over the Fast Access Control Channel (FACCH) along with a command that triggers the Handover. After synchronising with the new cell an acknowledgement is sent by the base station to the controller to switch the voice connection to the new cell. What remains is freeing the old TCH for further use by other subscribers.

2.3. The U_m Interface

As with all radio based networks the efficiency of the wireless interface, the interface between the MS and the BTS is of utmost importance to the overall performance of the network. The main reason for that is that resources on the air interface are scarce. Efficiency in this case can be seen as maximizing the quotient of transmission rate over bandwidth used [17].

The first section will explain how transmission in a GSM network is handled on the physical level and what techniques are used to maximize throughput. Afterwards the notion of logical channels, virtual channels that are mapped on top of the actual transmission, will be discussed and which channels are of importance for this project. The last section compares the network layers of the GSM stack to the ISO/OSI layer model, to give a basis for understanding where the framework employed in the practical part is situated in that hierarchy.

2.3.1. Radio Transmission

Without additional techniques, the BTS would only be able to serve a single caller at a time. Therefore even in older radio networks like the C-Netz in Germany Frequency Division Multiple Access (FDMA) is used. With FDMA a specific frequency of the broad frequency band of the BTS is allocated to a specific subscriber for a call, leaving other frequencies open to use for other subscribers connected to the same base station. Essentially this means that every BTS can serve multiple frequencies at the same time. This comes at the cost of additional hardware, since all the frequencies need their own transceivers and need to be amplified accordingly to guarantee the transmission quality. Additional hardware for each channel is also required to enable duplex transmission, meaning that sending and receiving can be done at the same time.

That number of available frequencies would not suffice to meet the demand, more communication channels were needed. To that end another technique has been introduced, called Time Division Multiple Access (TDMA). In GSM networks each of these sub-bands yielded by the FDMA procedure has a width of 200 kHz. Onto this smaller carrier frequency, TDMA frames are transmitted, that contain eight time slots. These frames have a transmission length of 4.615 ms. Each of these timeslots could host the data of a

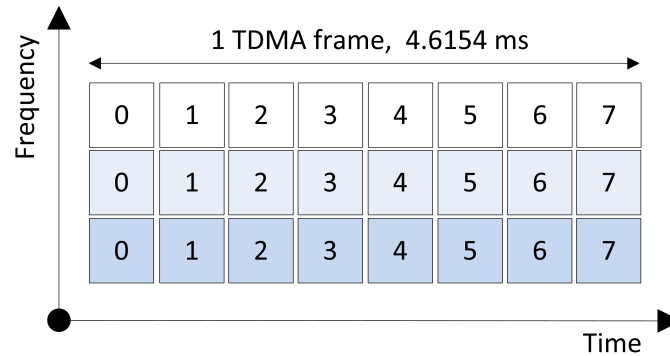


Figure 2.7.: The combination of FDMA and TDMA.

different subscriber, although the first two are usually used for signalling procedures. An illustration of how these multiplexing methods work together can be seen in Figure 2.7.

Frame Numbering

Another important aspect is the frame hierarchy and the resulting frame numbering since it is used for ciphering as well as channel mapping and synchronisation. The frame number is one of the inputs required to generate the ciphering key and is broadcasted frequently on the Signalling Channel (SCH) to keep mobile subscribers in sync.

An overview of the numbering hierarchy is illustrated in Figure 2.8. The timeslots on the lowest level of the hierarchy have a length of $4.615 \text{ ms} \div 8 = 577 \mu\text{s}$ and are also known as *Bursts* numbered from 0 to 7. Depending on what the Burst is used for the internal structure can differ but the duration is always the same. Every new TDMA frame the sequence number is increased by one. Since this number cannot be increased endlessly it is repeated every 3 h 28 m 53 s and 760 ms. This is the largest chunk in the frame hierarchy and it is called Hyperframe. Superframes and Multiframes are layers between the Hyperframe and the TDMA frame which can occur in different configurations. The 51-Multiframe consists of 51 TDMA frames and carries only signalling data whereas the 26-Multiframe contains 26 TDMA frames and carries traffic and control channels. Superframes can be seen as packages to wrap these different Multiframes in one package of the same length.

When a MS and BTS start to communicate the frame number has to be obtained by the MS through the SCH before it can ask for a channel. This is important since the frame number is a vital information indicating the chronological order of control channels. If the MS asks for a channel assignment in frame n and a channel is assigned to the MS, the assigned channels refers back to the frame n and thus the MS can find its channel amongst the others.

2. GSM

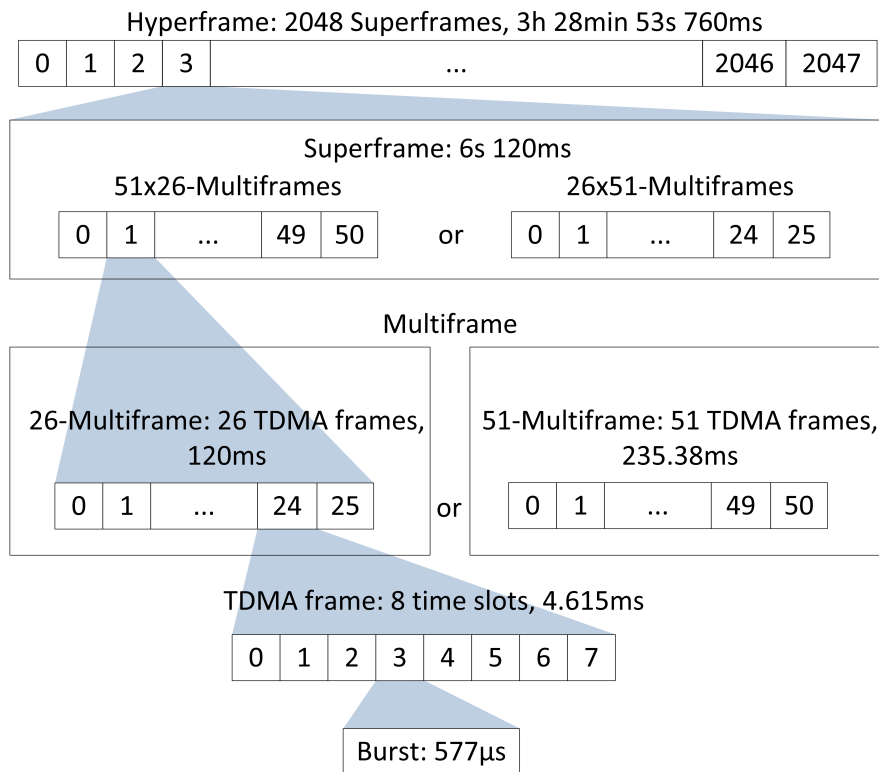


Figure 2.8.: Hierarchical composition of the different frames.

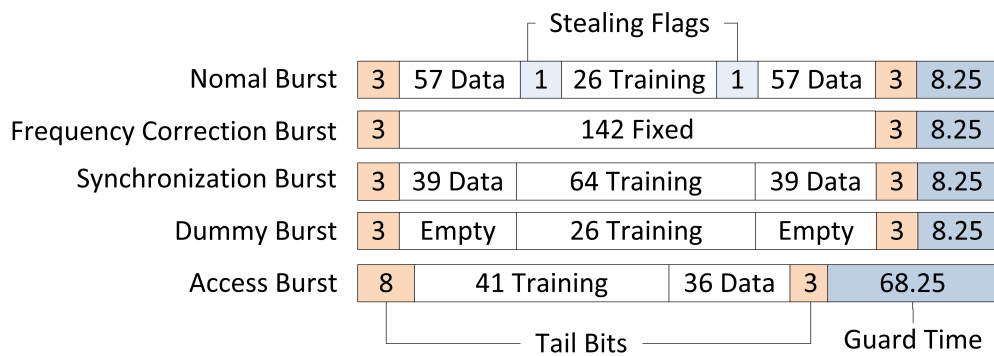


Figure 2.9.: Structural Comparison of different Burst types. After [10].

Burst Types

As suggested by the paragraph above there are different kinds of Bursts which are shown in 2.9 [10].

In addition to *data bits* and known fixed bit sequences every frame has *tail bits*, which mark the beginning and the end of a frame. The fixed bit sequence is called *training sequence* and appears in conjunction with the data bit sequences. During a radio transmission procedure the signal can be distorted by shadowing, reflection or other factors which would result in a loss of data. But since the training sequence is known it is possible to reconstruct the original signal by comparing the incoming training sequence with the expected one and thus conserving the data bits.

All Bursts contain *guard times* which separate them from the next Burst. This is necessary because subscribers can move around and thus slight variations in timing may occur. These variations could result in the collision of data from several different sources rendering it unusable. For subscribers that move at considerable speeds e.g. in a car this is not sufficient and an extra mechanism called *Timing Advance* is used. Basically the farther a subscriber is away from a base station the earlier a burst has to be sent, to compensate for the distance. The value for the Timing Advance is determined by the BSC after receiving a channel request message from the mobile station and afterwards constantly updated by the respective BTS.

The different Burst types are:

- **Normal Burst:** The basic information transmitting Burst. All information on traffic and control channels is transmitted by this Burst except for the Random Access Channel (RACH). Furthermore this Burst contains Stealing Flags (SFs). If these are set the Burst contains important signalling data that has to travel fast over the FACCH however no normal data can be transmitted in this case.
- **Frequency Correction Burst:** This Burst is sent frequently and is used by MSs to fine tune to the frequency of the BTS. It may also be used by the MS to do time synchronisation for TDMA frames. The periodic broadcasting of this frame is also called Frequency Correction Channel (FCCH) and shares a frequency with the Broadcast Channel (BCCH) as will be shown in the next section.
- **Synchronisation Burst:** This Burst contains time synchronisation information from the BTS to the MS as well as the running TDMA frame number. Periodic broadcasting of this Burst forms the SCH.
- **Dummy Burst:** When no other Bursts are sent on the frequency carrying the BCCH this one is transmitted to fill the gap. This way the MS can keep up doing quality measurements even if no data needs to be transmitted.

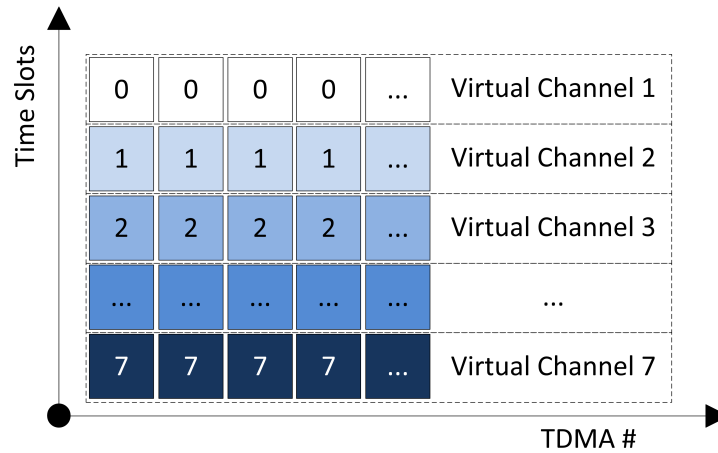


Figure 2.10.: Mapping of virtual channels on time slots.

- Access Burst: The Burst that is used to transmit data on the RACH. Since everyone can sent on the RACH without being given a timeslot via Slotted Aloha¹ procedure the guard times of this Burst are high as to reduce the probability of data collisions.

The information in this section described the physical properties of the Air Interface also called Layer 1 when referring to the standard ISO/OSI model. A short description of the other layers will be presented in Section 2.3.3.

2.3.2. Logical Channels

A logical channel is a virtual construct on top of the physical construct of frames to group similar information together. Since not all information has to be sent all the time these different information channels, e.g. broadcast information about the respective base station, can be multiplexed and sent together.

Mapping of these channels on the physical interface works in two dimensions. The first dimension is the frequency and the second is the time slot. Figure 2.10 shows this mapping of channels onto time slots over the course of multiple TDMA frames for one fixed frequency. This way each timeslot over the course of multiple frames can be regarded as a virtual channel. These resulting virtual channels can now be used by a multitude of logical channels to transmit information.

There are two main categories of logical channels distinguished by their usage [25], dedicated channels and common channels. Dedicated channels transport data meant for

¹Slotted Aloha is a medium access procedure in which each participant can send data in predefined timeslots. If collisions occur the data is discarded and each participant has to wait a random time interval before sending again.

a single subscriber whereas common channels contain information interesting to all subscribers.

Dedicated Channels

As mentioned above, these channels wrap the communication of a single user with the network. These are point to point channels.

- TCH: A data channels that is used to transmit voice data or data service packages.
- FACCH: A channel for transmission of urgent signalling data, e.g. Handover signalling. This data doesn't have to be send often it shares a timeslot with the TCH and uses the stealing flags to insert its own data.
- Slow Access Control Channel (SACCH): The uplink of this channel is used by the MS to transmit quality measurements of the cell and neighbouring cells to the base station, so the network can do Handover decisions accordingly. The downlink is used for Timing Advance data and power management data for the MS.
- SDCCH: On this channel signalling information is sent to a subscriber as long as no TCH has been assigned during the initialisation of a call. Text messages and Location Updates are also transmitted on this channel.

Common Channels

The common channels contain data interesting to all subscribers, thus having a broadcast nature. This channels are the main source of information gathered by the ICDS. These are point to multi-point channels.

- SCH: When the MS is looking for a cell to connect, this synchronisation channel is used.
- FCCH: Used by MSs to fine tune to the frequency of a certain base station and helps to find the start of a 51-Multiframe.
- BCCH: This channel is used to transmit information about the network and the base station itself through different *System Information Messages*. These contain the network name and cell identification as well as neighbourhood information on cells in the area and much more. This channel will be the main source of information for this project since it allows harvesting information without actively participating in the network and will thus be discussed in further detail in Chapter 3.2.1.
- PCH: If a subscriber is not assigned a dedicated channel yet, i.e. he/she is not active, they are notified on this channel if there is an incoming call or text. The

2. GSM

subscribers are identified by their TMSI which has been previously assigned upon entering the network so the IMSI does not have to be broadcasted. This channel will be used as an additional source of information for the ICDS.

- **RACH:** A subscriber that has been notified over the PCH can contact the network and request a SDCCH. Since this is a channel used by all connected and idle MSs, access has to be regulated. As the name implies access is random thus it can happen that two or more MS try to send at the same time. Slotted Aloha is used to handle access.
- **AGCH:** This is the channel used to respond to a MS if a request has been made on the RACH. The acknowledgement message also contains information on which SDCCH to use.

Combinations

These channels cannot arbitrarily be mapped onto Multiframe. There is a complex multiplexing scheme defined in GSM 05.02 [6] that explains which channel combinations can occur inside a Multiframe. A table containing the possible combinations can be found in Appendix A.2. The mapping of these specific Multiframe-configurations onto timeslots is not arbitrary either. Normally TS-0 and TS-1, the first two time slots, are used handle channels with signalling information. The BCCH for example, which we will use to harvest information uses TS-0 on the carrier frequency.

2.3.3. Layers

Design-wise the layers of the U_m interface resemble the layers of the ISO/OSI reference model specified by the ITU. This section will give a short overview over the first three layers with respect to the air interface [17] since these are the ones that the employed framework works on.

Physical Layer (Layer 1): This layer provides the facilities for the actual transmission of data. In case of the U_m interface this is the actual radio equipment. This layer does not know data types like user or signalling data. The data that it receives from Layer 2 are either single bits or an array of bits. On the algorithmic side of Layer 1 the Gaussian Minimum Shift Keying (GMSK) modulation is used to encode the data a Burst contains into radio signals.

Data Link (Layer 2): On Layer 2 packaging is done. The notion of data frames is introduced to have chunks of information on which error checking and potential retransmission of corrupted data can be performed. The Layer 2 protocol High Level Data Link

Control (HDLC) is used as a basis for Signaling System 7 (SS-7) as well as for Link Access Procedure, D Channel (LAPD), which are the basic protocols a classical telephone network operates upon. HDLC and its derivatives use start / stop markers and checksums to form data frames. The Layer 2 format changes through the course of the network while the data packages of Layer 3 may stay the same. When a transmission from a MS to the BTS is done LAPD Mobile (LAPD_m) is used which is essentially the same as the Layer 2 ISDN protocol with a few simplifications. From the BTS to the BSC LAPD_m converts to LAPD and afterwards is exchanged to Message Transfer Part 2/SS7 (MTP 2/SS7). For the air interface LAPD_m along with channel coding and Burst formatting form Layer 2. More information about these Layer 2 protocols can be found in the respective Technical Specifications of the 3GPP [1, 2].

Network (Layer 3): Layer 3 headers have to provide all the information necessary for the packet to be routed towards its recipient. As with Layer 2 information it may be the case that this header needs to be partially rewritten during the transmission of a package. Between the MS, BTS, BSC and MSC the Radio Resource (RR) protocol and the information needed to route a call into the SS-7 subsystem are part of Layer 3. This protocol handles configuration and allocation of radio channels as well as managing the dedicated channels to the subscribers. Therefore in a strict sense MM and CC information does not belong to Layer 3 functionality but is only transported via RR between MS and the NSS [17].

2.4. IMSI-Catcher

An IMSI catcher is a device that is used to capture the IMSI and IMEI numbers of mobile subscribers. The knowledge of the IMSI and IMEI numbers can be exploited to either tap into the participant's calls or pinpoint the location of the subscriber [12]. Another less known functionality is that if catchers do not relay intercepted calls they can be used to suppress mobile communication in a certain area e.g. during a police operation [32].

This topic came up in conjunction with crime fighting and prevention with the advent of mobile telephones. A mobile phone cannot be tapped in the same way as a landline phone since the subscriber can change places and also phones thus there is no designated line associated with him / her. This has proven to be a challenge to the authorities.

In 1996 Rohde & Schwarz a company based in Munich, Germany has developed a device called *GA 090* which was the first IMSI catcher. Its was capable of yielding a list with all the IMSI numbers in the perimeter as well as pinpointing the location of a subscriber given the IMSI. Short thereafter the *GA 900* was presented which had the additional capability of tapping into calls that originated from a particular IMSI. These commercial versions of catchers produced by Rohde & Schwarz were priced between 200.000 € and 300.000 € in 2001 [12]. Regulations prohibit the use of IMSI catchers for individuals

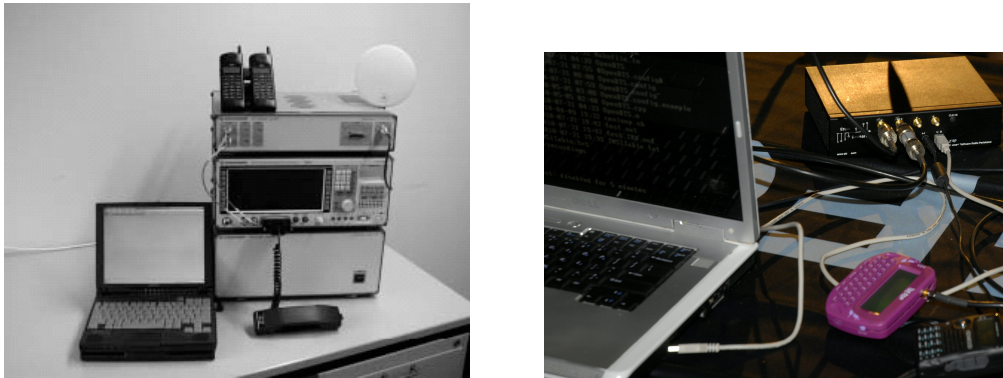


Figure 2.11.: A commercial catcher by Rhode & Schwarz [12] and a self built catcher introduced at Defcon 2010 [27].

since the frequency bands the GSM network uses are registered to providers. However it cannot be guaranteed that such a catcher is not used illegally. In addition to these commercial products different projects [30, 27] have shown that such devices can be built at a very low budget. This only intensifies the risk that is imposed by the abusive usage of such a catcher. Examples would be curious neighbours eavesdropping, or a jealous husband tapping into phone calls of his wife. On a more large scale, these devices are of great value for industrial espionage. Figure 2.11 shows a commercial model side by side with a self built catcher.

Section 2.4.1 will show how an IMSI catcher works and how subscribers can be caught. In addition the potency of these attacks will be evaluated and what risks these impose from a technical perspective. The next section will explain under which circumstances a catcher can be used in Germany from a legal perspective and show that this handling poses the risk of privacy breach to citizens.

2.4.1. Mode of Operation

Basically an IMSI catcher masks itself as a base station and lures subscribers in its perimeter to connect to it without their knowledge. In the attack [11] shown in Figure 2.12 the IMSI catcher is broadcasting a new Location Area Identifier (LAI) with the same CID as an formerly existing base station to the MS at very high power. This lures the MS to connect to the alleged base station due to stronger reception and announce itself since the Location Area Code (LAC) has changed.

Once a subscriber connects to the device, a command is sent to the MS which asks for the SIM's IMSI. This command is normally only used in case of an error [12] but can be abused this way.

An IMSI catcher can only impersonate a base station because authentication in a GSM

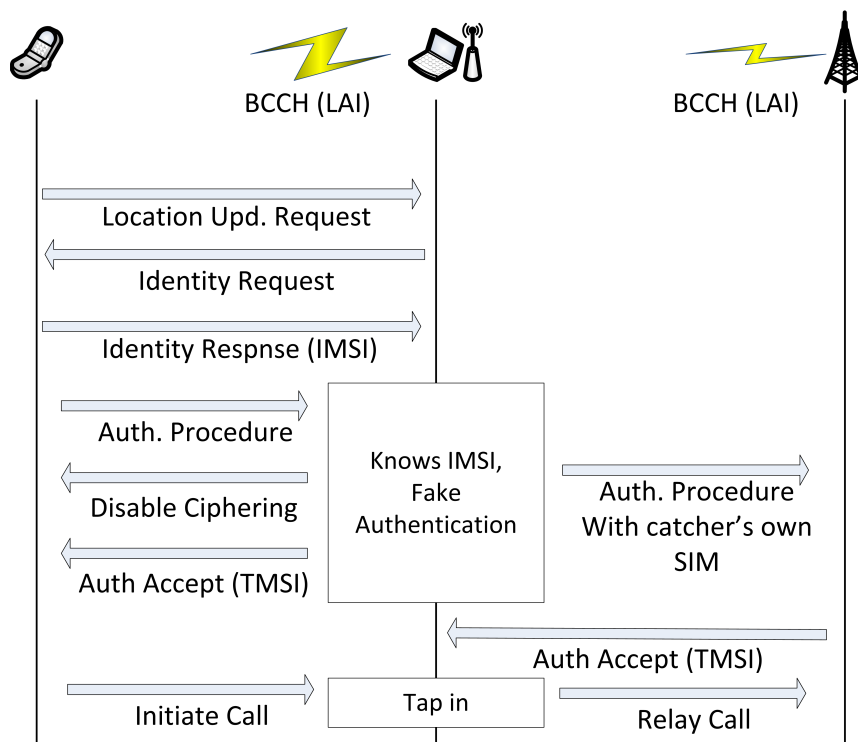


Figure 2.12.: IMSI catching procedure. Adopted and simplified from [11].

2. GSM

network is one-sided as discussed earlier in Section 2.2.2. The subscriber has no way of checking the authenticity of a base station but rather has to trust the broadcasted identifier which can be easily forged by a catcher. At this stage, the subscriber can already be localized as being in a certain distance of the catcher.

Having the IMSI the authorities can now also query the provider for personal information about the subscriber, however criminals may use fake credentials when obtaining a SIM card. Since it is only possible to catch all the IMSIs in an area, the person to be observed has to be followed and the catcher has to be used multiple times. Each time it yields a set of numbers in the area. The IMSI that is part of all the sets is the IMSI of the person under observation. More catchers can now be used to triangulate the position. The next step is also possible because of a design decision made in the GSM protocol. Encryption itself or certain kinds of strong encryption are not allowed in all countries. Therefore it is possible for the base station to request the encryption algorithm A5/0 which means that no encryption will be used for the calls at all. Only a few mobile phones display that encryption has been disabled by the BTS.

At this point the setup for a man-in-the-middle attack [11] on calls is completed. The catcher itself is connected to the mobile network with its own SIM. If the subscriber now initiates a call, the call can be routed by the catcher into the network and since encryption is turned off it can also be listened to or recorded. The subscriber doesn't notice this privacy breach except in the rare cases where the phone displays that encryption has been turned off. The IMEI is also harvested in a similar fashion if the observed person tries to switch SIM cards on a regular basis [12].

Attacks

When operating a catcher the first and most important step is to actually trick the MS into connecting to the catcher. A lot of phones save the frequency they were tuned to last and upon connecting to the mobile network this is the first frequency they try. Therefore a MS has to be set to *normal cell selection* mode which means it starts scanning for the best base station available. Three ways of luring a subscriber to the forged cell were presented by Wehrle for the 'Open Source IMSI-catcher' project [30]. These methods differ on whether the MS already is in normal cell selection mode or not.

MS is in normal cell selection mode: The IMSI catcher has to fake a cell configuration consistent with the provider the target MS is looking for broadcasting at any frequency. The MS will choose the base station with the strongest reception levels so the catcher has to make sure that no other available station has a better reception than itself. Some IMSI catchers even broadcast at a higher power than it would be allowed for normal BTS [32].

MS is already connected to a network: If this is the case then the connection to the current cell needs to be broken or the MS has to be convinced to switch the cell to the

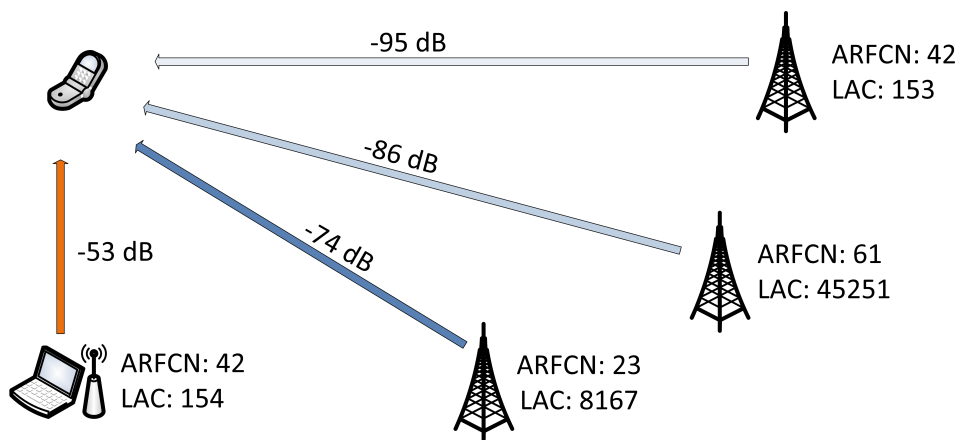


Figure 2.13.: Takeover attack of an IMSI catcher on a base station.

catcher's. A MS that is in passive mode, meaning no active calls are conducted will do quality measurements on the neighbouring cells of the cell it is connected to. It will not scan for *new* base stations. Therefore the IMSI catcher has to replace an existing base station that already is part of the neighbourhood of the current cell, so the MS will do power measurements on its frequencies. Figure 2.13 illustrates the procedure. In the beginning the MS is connected to ARFCN 23 since its the strongest station in the perimeter. It will nevertheless conduct power measurements on ARFCN 42 and ARFCN 61 since these are neighbours. The IMSI catcher is switched on sending also on ARFCN 42. When the MS does its next power measurement on this ARFCN it will notice that the reception changed from -95 dB to -52 dB which is even better than the reception of the station it is currently connected to. Therefore it will change the cell to the catcher's. Since the catcher broadcasts a different LAC the MS announces itself by sending a Location Update.

This method will not work when a call is in progress. In that case the only way to immediately disconnect the subscriber from the BTS and force normal cell selection mode is by jamming the frequency that belongs to the BTS.

It is important to note that from these three approaches of luring a MS to connect to a fake base station two types of attack configurations for the IMSI catcher side can be distinguished. To mimic a cell of a certain provider the IMSI catcher has either to open up a cell with a new CID or to replace a cell. In case of opening up a new cell, the IMSI catcher has to choose a consistent configuration that blends into the environment of the respective provider while in case of replacing a cell, the whole configuration has to be copied as to not raise suspicion. This fundamental distinction of IMSI catcher configurations will be of help later when trying to uncover these devices.

Risks and Irregularities

An IMSI catcher cannot target an individual subscriber, it always targets an area thus breaching the privacy of uninvolved subjects. Apart from that, a catcher that does not relay calls takes away the possibility for all connected people in the area to initiate calls. Even if the the catcher routes calls into the network, since it only has one SIM card, it can only route a single call. This can be very dangerous because no emergency calls can be submitted in that area during the time of operation which can be as long as five to ten minutes [12].

Another irregularity apart from using no encryption is that people caught in this area cannot be reached on their mobile phones since they are not registered on the main network. As a consequence of the proxy functionality of the IMSI catcher, when a call is routed into the network the recipient can only see the number the catcher is registered with or 'Number Withheld' however not the original number.

2.4.2. Law Situation in Germany

First reports of an IMSI catcher used by authorities in Germany dates back to 1997. Until November 2001 35 cases of use were officially confirmed by the Bundesministerium des Inneren (BMI) [12]. It was used to fight organised and serious crime like hostage-takings or drug traffic by the Bundeskriminalamt (BKA) and Bundesgrenzschutz (BGS). Attempts have been made by the government to move the catcher out of the legal grey zone and use the *GA 900* with its capabilities of tapping in to calls for crime prosecution. At that time however the attempt was dismissed.

On 14th of August 2002 with Section §100i of the Strafprozessordnung (Code of Criminal Procedure) a law basis was given to the device. Afterwards on 22nd of August 2006 this section and its accordance with the Grundgesetz (Constitution) was affirmed. The use of an IMSI catcher with prior authorisation by a judge does not affect peoples' right to privacy nor does it contradict the Datenschutzbestimmungen (Secrecy of Confidential Data) or the Fernmeldegeheimnis (Secrecy of Confidential Communication). In Austria the need for a prior authorisation by a judge was removed in January 2008. During the first four months of 2008, 3800 cases of catcher use were reported in Austria [32].

Gradually, starting with §100i it has become easier for the police and agencies to use electronic surveillance. Although on 2004 it was decided by the Federal Court of Saxony, that electronic surveillance is not to be used in the substantially intimate sphere of private premises. This regulation can be overthrown if linked to the field of serious crimes and terrorism. Section §100a(1) describes that the police merely needs to show certain evidence underpinning a suspicion that a criminal act was committed [24]. This threshold can often be overcome easily, since it is hard for courts to check evidence for sufficiency thoroughly given the short time frame of response. Technically it would even be possible for the authorities to use a catcher without prior authentication by a judge since it is hard

to proof that a catcher was used at a specific point in time. This fact makes is hard to prosecute or even unveil the illegal operation of an IMSI Catcher used by third parties or criminals.

These loose regulations, the hardness of detection together with the fact that third parties can buy or build catchers poses a grave threat to privacy of each individual person.

3. IMSI Catcher Detection System

This chapter will give outline the ICDS and the technologies and techniques used. The first part summarises the frameworks and hardware upon which the system has been developed. From this point on the second part explains how this framework can be used to harvest information and describes the process that is used by the ICDS to evaluate this information. The last part shows how to configure and use the system to gather information from the surroundings and unveil IMSI catchers.

3.1. Framework and Hardware

The following section will give an overview of the OsmocomBB framework and how it works in conjunction with the Motorola C123 mobile phone to enable information harvesting for the ICDS. OsmocomBB is one of many Open source mobile communications (Osmocom) projects¹. It delivers an open source implementation for the base band chip for certain mobile phones. Another Osmocom project is OpenBTS which delivers software for configuring and operating a BTS. OpenBTS was used to realise the open source IMSI Catcher [30] and the base station that will be used later to evaluate the performance of the ICDS.

3.1.1. OsmocomBB

OsmocomBB implements the baseband part of GSM as an open source project. Baseband part in this case means that it is an open source software to control the baseband chip inside the mobile phone. The baseband chip is the processor that manages the radio functionality of a mobile device. The goal is to have a phone, when using compatible hardware, operating on open source software only as opposed to proprietary baseband implementations. Therefore the project scope is implementing GSM Layer 1–3 as well as hardware drivers for the baseband chipset. A simple user interface on the phone is planned but not yet implemented. At this stage a verbose user interface on the computer is used. The implementation being open source is beneficial to multiple areas [23]:

- **Security:** The software running on the baseband chips is highly proprietary and closed. The source is often disclosed only to the mobile phone manufacturers using

¹Osmocom, <http://osmocom.org/> [Online; Accessed 04.2012]

3. IMSI Catcher Detection System

the specific chipset. One cannot be sure that this software does not have bugs that could be exploited and ultimately pose a security risk to the subscriber.

- **Education:** Currently knowledge about GSM and its layers on a technical level is not very well spread. An open source implementation as a reference could serve to educate more developers generally interested in the subject of mobile communications and thus improve products and software. Additionally this implementation enables universities to hold practical lab courses and interested individuals to do hands-on experiments.
- **Research:** A free implementation can decouple research on GSM technologies from the industry since key technologies are no longer only available to researchers employed by a specific company. Additionally this way security holes can be uncovered and fixed more easily. Modifications to the protocol stack can be deployed and tested in a real environment. It is also possible to redirect all received and sent packages directly to Wireshark¹ for further analysis.

Project Status

At this point Layer 2 and Layer 3 do not actually run on the phone but rather on a computer to which the phone is connected via a serial cable. Layer 1 runs inside the custom firmware on the ME itself, since the procedures involving Layer 1 are time critical. This has advantages as well as disadvantages. The disadvantage is that in order to run an application written using OsmocomBB you always have to have a computer in addition to the phone. The benefit however is that during the development process, the phone does not have to be touched after an initial deployment of the firmware. This means code can be modified, compiled and tested locally without the need of remote debugging. Experimenting is considerably easier this way. This separation however would not work in the original GSM specification, therefore an extra interface layer between Layer 1 and 2 had to be implemented to handle messaging over the serial interface between the two original layers. It is called Layer 1 Control, L1CTL.

The current state of the project is, according to a presentation given on the 27th chaos communication congress² by Dieter Spaar and Harald Welte, that the network Layers 1–3 are fully implemented, SIM cards can be accessed or emulated and GSM cell selection and reselection are working. A3/A8 as well as A5/1 and A5/2, Full Rate and Enhanced Full Rate codecs are there, so it is possible to do voice calls with an OsmocomBB application written for that purpose, called `mobile`. It features a terminal/telnet based interface much like Cisco routers however there is no user interface for the phone so far.

¹Wireshark, <http://www.wireshark.org/> [Online; Accessed 04.2012]

²27C3 public wiki (Day 3), <http://events.ccc.de/congress/2010/wiki/Welcome> [Online; Accessed 04.2012]

Component	Specification
Band	GSM 900, GSM 1800
Size	101 × 45 × 21 mm
Weight	86 g
Battery	920mAh Li-Ion battery
Digital Baseband	Texas Instruments Calypso
Analog Basenand	Texas Instruments Iota TWL3025
GSM Transceiver	Texas Instruments Rita TRF6151C

Table 3.1.: Technical specifications for the Motorola C123.

3.1.2. Motorola C123

Since the general idea behind OsmocomBB was to become a vendor independent open source GSM implementation for everyone to use, there were certain requirements the targeted hardware would have to meet. For the consumer side requirements these were having a low price and a good availability. This criterion rules out do-it-yourself (DIY) approaches since the number of produced devices would be low and thus costly or a significant technical knowledge would be expected from all users to assemble the hardware. For the developer side this would also mean implementing a lot on the lower levels of analog logic. Therefore the Motorola C123 was chosen, an old, very cheap phone that is well spread. It has the advantage of being very simple on the hardware side and very well documented since the technical documentation for the Texas Instruments Calypso Chipset [15] has been leaked. Table 3.1 shows an overview of the main specifications for the phone. The OsmocomBB framework should work well or with small adjustments for any phone that is based on the same components. Figure 3.1 shows an image of the Motorola C123 circuit board with the components mentioned before. Another reason for choosing this hardware platform was that during the start of the OsmocomBB project an open source implementation of GSM Layer 1 was already available on Sourceforge (TSM30 Project) that could be used as a reference. At this point the original project has been removed from the Sourceforge site.

In order to use the Motorola C123 in combination with the OsmocomBB framework the custom firmware implementing Layer 1 and L1CTL has to be flashed onto the board. This has to be done using a RS332 serial cable that is connected to the 2.5 mm audio jack. The audio jack of the Motorola C123 and other Calypso based mobile phones typically have a 3.3 V serial port on their audio jacks. These cables are normally referred to as T191 unlock cables. A variety of stores around the internet sell the cables ready made for about \$10–\$15¹. One must be careful when using the PC's serial port to communicate with the

¹FoneFunShop, http://www.fonefunshop.co.uk/table_picker/773_Motorola_

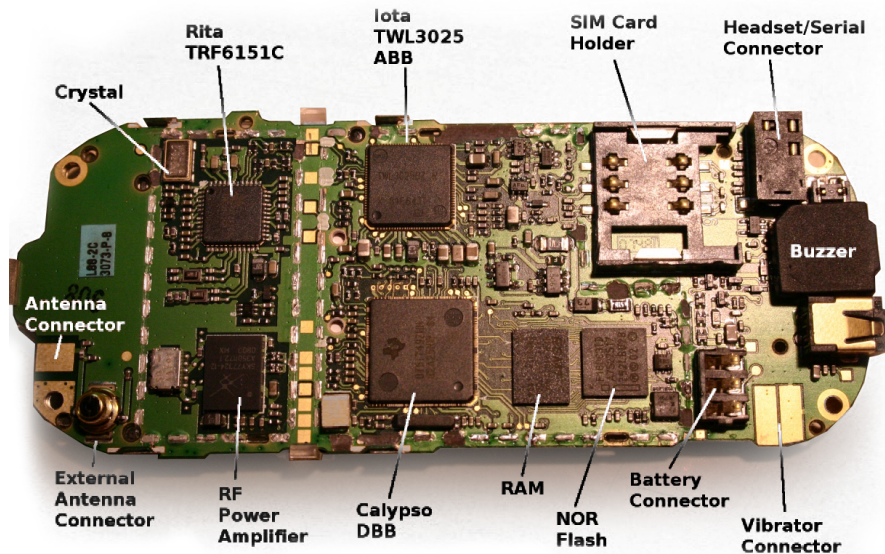


Figure 3.1.: Circuit board of the Motorola C123 with its components [22].

phone though. Since the phone's serial operates at 3.3 V and is internally connected to the 2.8 V IO-pins of the baseband processor, directly connecting it to the computer's 12 V serial port will destroy the hardware. Therefore it is recommended to use a USB serial cable. Schematics for such an unlock cable are given in Appendix B.3.

3.1.3. OsmocomBB and ICDS

The setup that is used for the ICDS project can be seen in Figure 3.2. It was build and tested in a Xubuntu 11.10 environment¹ which is a more lightweight variant of the popular Debian based Ubuntu Linux distribution. The process of acquiring, compiling and running the OsmocomBB framework itself in this environment is explained in Appendix B.1.

When setting up the system it is recommended *not* to use a virtual machine. The bootloader and the firmware can fail to be deployed correctly if a virtual machine is used as development system. This is because the protocol used by Motorola to do the actual flashing process is *very* time critical and thus timeouts can occur that are caused by the overhead the virtual machine imposes on the hardware/software communication.

As can be seen in Figure 3.2 Layer 1 of the OsmocomBB GSM stack runs on the phone which is connected via a serial cable to the computer running the ICDS. On the computer

T191_W220_W375_OSMOCOM_etc._USB_Unlock_Cable.html [Online; Accessed 04.2012]

¹Xubuntu, <http://xubuntu.org/> [Online; Accessed 04.2012]

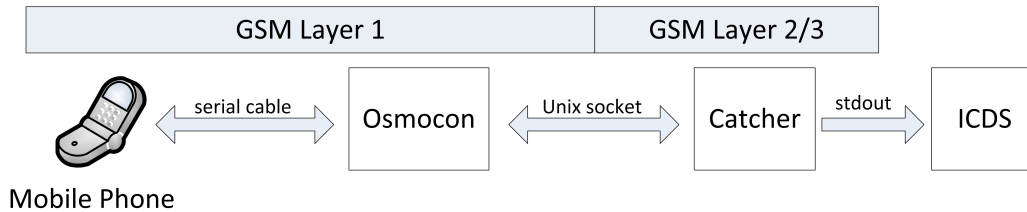


Figure 3.2.: Interaction of the OsmocomBB components with the ICDS software.

side the `osmocon` program provides a general interface to the phone. `osmocon` is also used to load the firmware up to the Motorola C123. Other software can communicate with `osmocon` and subsequently with the phone using Unix sockets.

The program `catcher`, the OsmocomBB part of the ICDS, is a modified version of the `cell_log` by Andreas Eversberg that interfaces with `osmocon` to harvest information from BTSs and forward it to the core ICDS. It can be seen as a Layer 3 program that scans through available frequencies and reads information from the BCCH whenever one such channel is available on the frequency at hand. The forwarding is done directly via `stdout` since it runs as a child process of the ICDS. In a similar way, `pch_scan` gathers information on the PCH of a specific base station. The functionality of `catcher` and `pch_scan` will be explained in detail in Section 3.2.1 while the implementation and operation of the ICDS will be discussed in Section 3.3.

3.2. Procedure

The main goal of the ICDS is to reach a conclusion on whether it is safe to initiate a phone call or not, in other words if the base station our mobile phone will connect to is trustworthy. As mentioned before, as soon as a subscriber connects to an IMSI catcher it automatically gives up information on his/her location. Therefore this project will use a passive approach on information harvesting, meaning we will only use information that is broadcasted or freely available as to not give up any hints of the ICDS being active.

To that end a four-step process is taken. First *information is gathered*. This process is explained in detail in Section 3.2.1. After information on the surrounding BTSs is ready inside the ICDS, a set of checks is evaluated on each base station individually, with each yielding a specific result for the station. These checks are called *rules* and discussed further along with the next two steps in Section 3.2.2. Afterwards the results the rules yielded for each base station have to be aggregated into one single result for each BTS by an *evaluator*. At last, after every BTS has its evaluation it can be decided whether to *tell the subscriber* if it is safe to initiate a phone call or not.

TC	System Information Type
0	Type 1
1	Type 2
2,6	Type 3
3,7	Type 4
4,5	Any (optional)

Table 3.2.: Type Codes and the corresponding System Information Types [10].

3.2.1. Information Gathering

As explained in Section 2.3.2 every base station has an associated BCCH where information about the station and its network is spread. BCCH frames are always sent inside a 51-Multiframe. After the MS has synchronised using the values on the FCCH and SCH it can determine which kind of information is hosted inside the BCCH message. These so called *System Information Messages* originate at the BSC and are produced for each BTS individually and then periodically broadcasted. Since all the required information would not fit inside a single frame there are different kinds of System Information Messages that are distinguished by their Type Code (TC) and host different kinds of information. The type can be extracted using the Frame Number (FN) of the frame the message is sent in [10]:

$$TC = (FN \text{ div } 51) \text{ mod } 8$$

Table 3.2 shows how the TCs can be mapped on those types. For this project the System Information Type 1–4 are of interest because these are available to all MSs that tune in to the particular BCCH of the respective BTS without actively connecting to it.

The information contained inside the System Information Messages is harvested via the `catcher` program. `Catcher` is implemented inside the `OsmocomBB` framework and connects over the `osmocon` application to the Motorola C123. At first a sweep scan is done over all the ARFCNs to measure their reception levels in order to determine where base stations and thus BCCHs are located. Afterwards `catcher` tunes the phone to those specific frequencies where a BTS was found.

At each such frequency it waits until all the System Information Messages are gathered and extracts parameters where possible. The parameters along with the raw data are forwarded to the main ICDS application for further evaluation. An example of a fully parsed System Information Type 2 can be seen in Figure 3.3 [17]. The Neighbouring Cell List which is a very valuable source of information is located in inside the highlighted section of the message. Examples for all the System Information Messages used, along with an interpretation are located in Appendix D. As long as scanning mode is active all the available stations are scanned repeatedly and changes in the BTSs will continuously update the data model inside the ICDS software. The parameters harvested so far are:

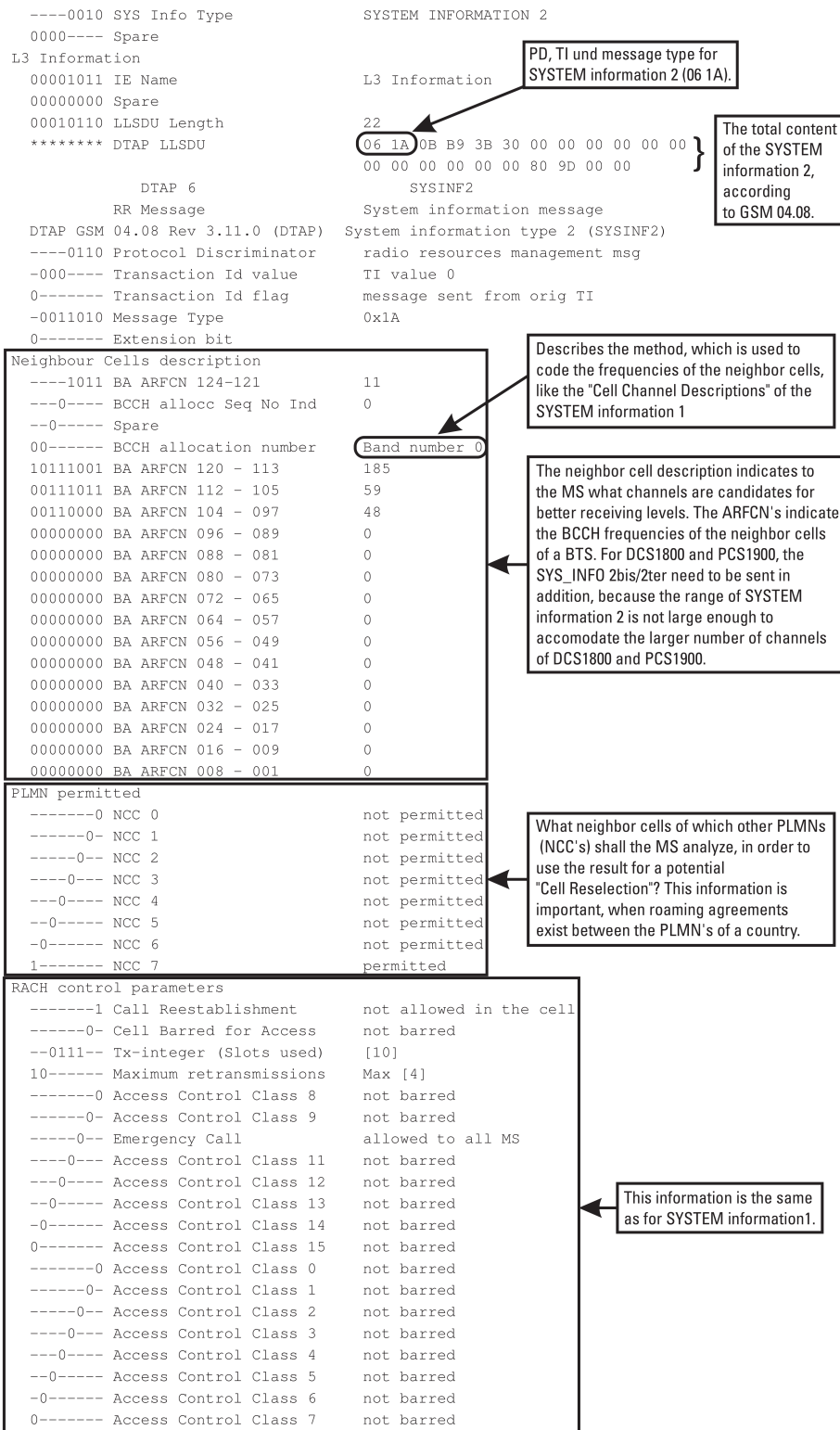


Figure 3.3.: System Information 2 Message [17].

3. IMSI Catcher Detection System

- MCC: The Mobile Country Code the base station is broadcasting.
- MNC: The Mobile Network Code the base station is broadcasting.
- ARFCN: The ARFCN on which the base station is located.
- rxlev: Receiving strength in dB. This parameter is measured by the Motorola C123 and not part of the System Information Messages. Even small changes in the location can have a large impact on this parameter due to shadowing and reflection.
- BSIC: Because of frequency reuse in a cellular network it is possible that two different base stations can sent at the same ARFCN. In order for the MS to keep these apart the Base Station Identification Code (BSIC) is also broadcasted. It consists of a Network Color Code (NCC) identifying the provider, so the MS can filter out messages that it does not need beforehand and the Base Station Color Code (BCC) that must be unique for a given provider over all base station in a large area.
- LAC: This is the last part of the LAI (that consists of MCC + MNC + LAC) and is a hierarchical identifier for a given base station. The hierarchy is provider wide, meaning two different providers may use LACs with a completely different numbering system. The LAC is used by the provider to tell the ME that it entered a new area and has to announce itself.
- Cell ID: The Cell ID is a unique identifier for the cell the MS is connected to. Unique in this case means unique in a large area so that a mobile phone should never receive the same Cell ID for different base stations.
- Neighbouring Cells: Each base station keeps a list of other base stations in the perimeter for the MS to scan and determine if there is a BTS with a better reception in the area.

Note that there are different formats for the Neighbouring Cell List since the original number of 17 bytes could only present a bit mask for 124 neighbouring ARFCNs. This works for the 900 MHz band, but for the extended 900 MHz and the 1800 MHz band the System Information Type 2bis and System Information Type 2ter have to be harvested additionally to construct the Neighbouring Cell List.

The `pch_scan` tool does not rely on the BCCH but rather on information available on the PCH as the name implies. If a mobile phone is connected to a base station and not actively participating in a communication process, it is in a passive mode to save battery waiting for either the user to initiate communication or the network to contact it. As mentioned in Section 2.3.2 the network contacts the MS on the PCH if there is a text message or a call waiting to be delivered. The procedure is outlined in Figure 3.4. A paging request by the network is answered by the MS by requesting a dedicated channel,

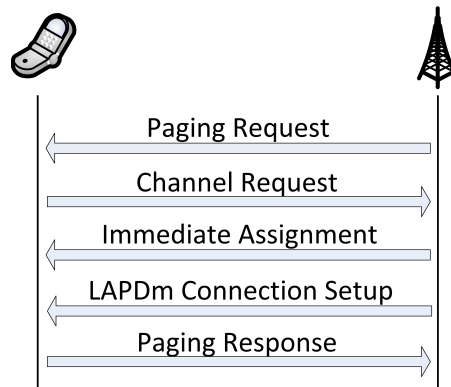


Figure 3.4.: Procedure taken when the network has a call/text waiting for a passive subscriber.

which is assigned by the network in turn with an IA. From this point on the connection can be set up.

The `pch_scan` listens for activity on this channel and harvests the following information:

- **Pagings:** Informs the ICDS about every Paging Message that has been caught.
- **Immediate Assignment:** If an IA is caught, it is logged and parsed. The TMSI that got the IA as well as the assigned channel number and whether it is a frequency hopping channel or not is forwarded to the ICDS.

3.2.2. Information Evaluation

Each base station is evaluated the moment the data completely arrived at the ICDS application. Additionally when a new BTS has been found and added all formerly discovered stations are also re-evaluated since new discoveries can have an impact on the rules that evaluate the context surrounding an old base station.

As mentioned above, evaluation is done based on constructs called *rules*. Each rule represents one check that can be performed on a base station and yields a result based on its findings. A rule can also be seen as a mapping from a set of input parameters to one of the values *Ok*, *Warning*, *Critical*, *Ignore*.

$$\{\text{Base station parameters}\} \mapsto \{\text{Ok|Warning|Critical|Ignore}\}$$

A *Critical* result means that the base station evaluated has a critical configuration error or critical settings that are not found on normal base stations, e.g. unknown provider names or empty neighbourhood lists. This station should not be trusted.

3. IMSI Catcher Detection System

Rule	Functionality
Provider Known	Checks whether the provider is in a list of known providers.
Country / Provider Map	Checks whether the given provider is a valid provider for the given country.
LAC / Provider Map	Checks whether the LAC of the station is in the normal LAC range for that provider given the area.
ARFCN / Provider Map	Checks whether the ARFCN is in the officially registered range of the provider.

Table 3.3.: Configuration Rules implemented inside the ICDS.

If a *Warning* status is yielded the BTS at hand has some concerning features but it could not be said whether it really is an IMSI catcher or sheer coincidence. An example would be a base station having a Neighbouring Cell List of which none of the cells therein have actually been discovered up to that point. The list could either be a fake or it could simply be coincidence that the scan has not found any. They could have been out of range for example.

In some cases a rule cannot yield a finding. That is when the state is explicitly set to *Ignore* so the evaluator knows that this rule should have no influence on the final outcome. This is the case for example when a rule refers to a parameter that has not been looked up or scanned.

If everything went as expected, *Ok* is returned.

The rules can be divided into four different categories depending on how they work and which situations they are tailored to. Most of the rules are parametrised so they can be tweaked to different environments and standards. The different rule categories are *Configuration Rules*, *Context Rules*, *Dabase Rules* and *Scan Rules*.

Configuration Rules

The first set of rules called *Configuration Rules* targets the base station itself. Rules in this category are meant to check parameters that concern the BTS for integrity and configuration mistakes that could have been made by an IMSI catcher operator. An overview of which Configuration Rules are currently implemented inside the ICDS is given in Table 3.3.

A few things have to be noted when configuring these rules. Since there is no official listing or rule how the LAC is derived the LAC / Provider Mapping Rule needs knowledge of the area in which the ICDS is used. The ICDS itself can be used to gather that knowledge but it has to be done prior to using the rule for base station evaluation. The ARFCN range each provider has registered in Germany can be looked up at the website

Rule	Functionality
LAC Median Deviation	Checks whether the LAC of the given BTS deviates more than a certain threshold from the median LAC of that provider.
Pure Neighbourhoods	Checks whether all found stations in the Neighbouring Cell List share the same provider.
Neighbourhood Structure	Checks the structure of the Neighbouring Cell List for certain patterns.
Fully Discovered Nbhds.	Checks whether all the cells in the Neighbouring Cell List have actually been found.
Cell ID Uniqueness	Checks whether there are other cells with the same Cell ID.

Table 3.4.: Context Rules implemented inside the ICDS.

of the Bundesnetzagentur¹ which is needed for the ARFCN / Provider Mapping Rule.

The main problem at this point is that all the parameters that can be checked by these rules can also be set by the operator of the IMSI catcher. If these are set in a consistent way this set of rules is not sufficient to identify a catcher. Therefore another set of rules has to be added that incorporates information of the surrounding nodes.

Context Rules

The second set of rules is called *Context Rules*. As the name suggests these rules serve the purpose of checking how well a given BTS fits into its neighbourhood. Table 3.4 shows which rules have been implemented.

For the LAC Median Deviation the median was chosen over the average since an extreme value (ill configured IMSI catcher) would have too strong an impact on the average to which all the BTS are compared. It could even have such a strong effect on the average that legitimate base stations would fall below the threshold and be recognised as catchers. The threshold when a deviation is evaluated as being *Critical* can be set in the configuration section for the rule. A value of 0 would mean that no deviation from the median is allowed. This could lead to problems as some experimental scans have shown. However in none of the scans more than two different LAs have been found per provider and since these were neighbouring areas, the difference in the code was only 1. For the Freiburg

¹Bundesnetzagentur Vergabeverfahren,

http://www.bundesnetzagentur.de/cln_1911/DE/Sachgebiete/Telekommunikation/RegulierungTelekommunikation/Frequenzordnung/OeffentlicherMobilfunk/VergabeVerfahrenDrahtlosNetzzugang/vergabeVerfahrenDrahtlosNetzzugang_node.html [Online, Accessed 04.2012]

area a 1% threshold for the deviation yielded good results.

Neighbourhood Structure The neighbourhood structure is the graph that is described by the Neighbouring Cell List located in the System Information 2/2bis/2ter constructs. Figure 3.5 shows an extract of the neighbourhood graphs at the Faculty of Engineering of the University of Freiburg¹. The E-Plus subgraph has been enlarged. It can be seen that for each provider, the neighbourhood forms an isolated, nearly fully connected subgraph. Nodes with a green background have an *Ok* rating, while the red node has a *Critical* rating. The bordering white nodes have not yet been discovered and evaluated therefore they have no outgoing edges. This could be the case because they are too far away for the Motorola to receive or because of signal damping due to shadowing and reflection effects. In the ICDS the aspect of isolated subgraphs for neighbourhoods is captured inside the *Pure Neighbourhoods Rule*.

An interesting fact is that one node inside the E-Plus subgraph on the upper right is marked *Critical*. This is because it is a BTS of the university's own GSM network. It was set up to be in a E-Plus neighbourhood but is not consistent with the E-Plus nodes surrounding it. Therefore it is marked by the ICDS. The node was set up inside the E-Plus neighbourhood for another Master project² at the Chair of Communication Systems where the goal was to estimate the most probably position of a subscriber given his/her reception strengths.

Some of the attacks discussed in Section 2.4.1 imply a certain structure of the neighbourhood graph. Since the IMSI catcher tries to lock in MSs that have connected from switching back to a normal cell, the neighbourhood list of such a catcher cell would either be empty or would only host neighbour cells that have a lower reception strength than itself. An empty Neighbouring Cell List is represented in the graph by a node that has been discovered and has no outgoing edges. A Neighbouring Cell list containing only imaginary nodes serves the same purpose. Figure 3.6 shows a simplified regular neighbourhood graph compared to a graph with two catcher nodes inside. In this case catcher C chose the attack where it replaces a previously existent BTS whereas catcher D opened up a new cell. Replacing has several advantages, one being already integrated in the neighbourhood of other nodes. Mobile phones will constantly monitor the reception strength of all neighbouring nodes and thus also the reception strength of the IMSI catcher which replaced one. For catcher D it is the other way around, it has only outgoing edges. This means that this cell is not known by any other node of the same provider. Nevertheless it has some outgoing edges to nodes with significantly less transmission strength to not stick out too much as a completely isolated node. Combinations of these two approaches are also possible. These thoughts are basically what is captured inside the *Neighbourhood Structure Rule*.

¹Georges Koehler Allee, Freiburg

²Cite Richy

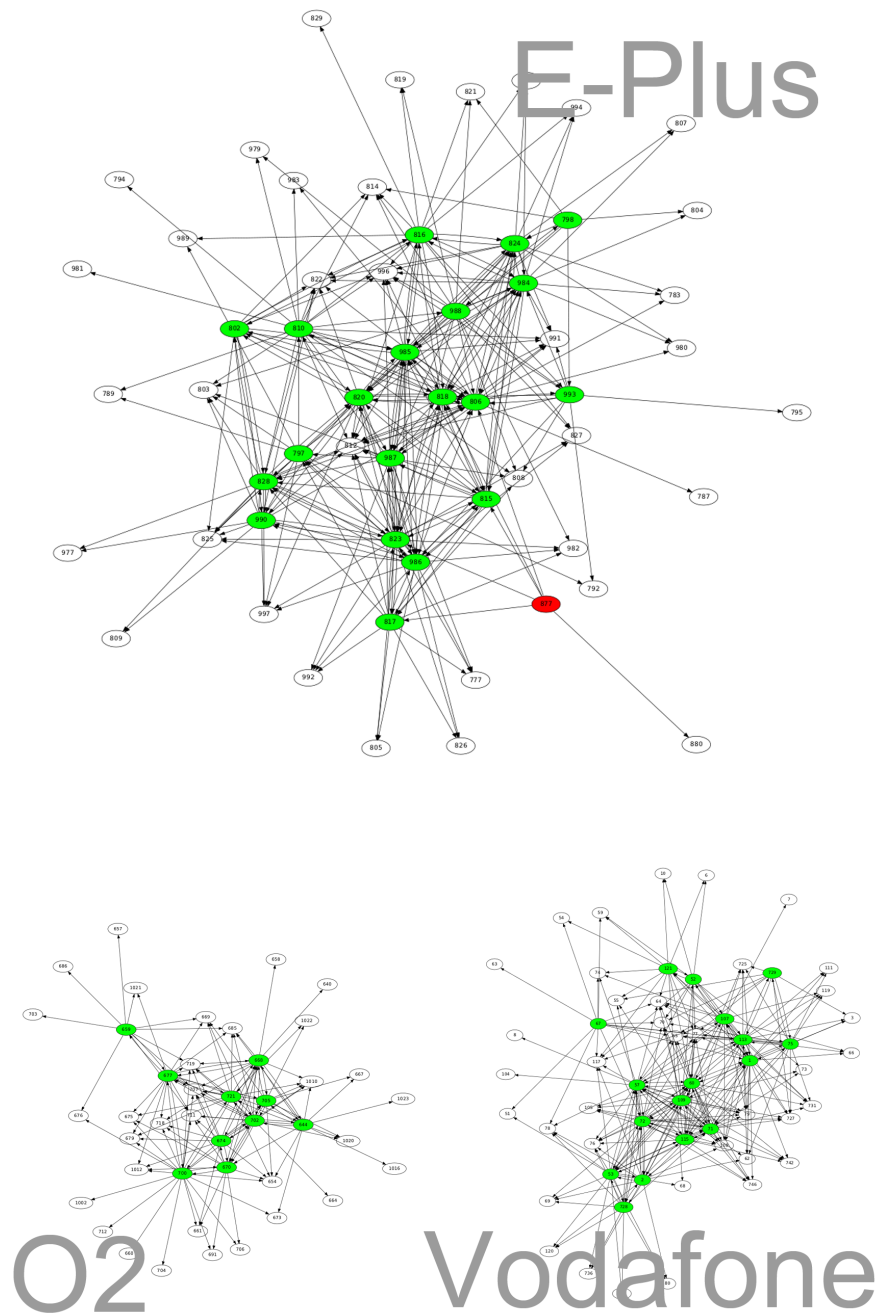


Figure 3.5.: Some base stations and their neighbourhood connections at the Faculty of Engineering.

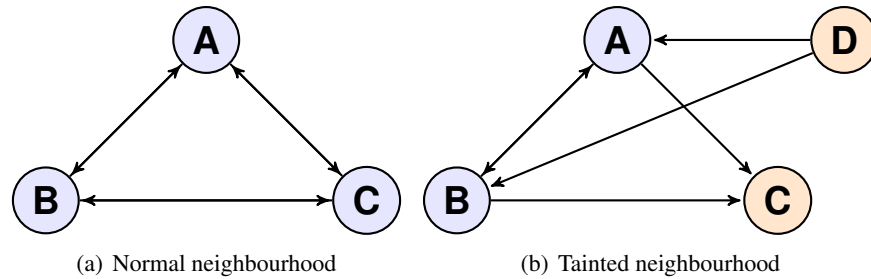


Figure 3.6.: Comparison between a normal neighbourhood subgraph and a tainted one.

Rule	Functionality
Cell ID Database	Checks all CIDs in the area against a database.
Local Area Database	Checks whether the LAC of the given BTS deviates.

Table 3.5.: Database Rules implemented inside the ICDS.

Database Rules

Let us do a quick summary of the situation so far. To investigate the current possibilities unveiling a catcher we will look over the parameters with the two attack types presented in Section 2.4.1 in mind. For both attack types presented it is possible to find a parameter configuration that does not raise suspicion, if the operator chooses a compatible ARFCN, etc. for the mimicked provider. Therefore the Configuration Rules and most of the Context Rules will yield an *Ok* result.

The Neighbouring Cell List is a bit different. Since the catcher wants to keep lured subscribers it will normally have an empty list or a list pointing only to BTSs imaginary neighbours. Both of these cases can be detected. However the operator *may* also choose to set a list consistent with the neighbouring cells. This would lower the chances of success for the catcher but also make it blend better in its environment and thus harder to detect.

For the CID there are basically two possibilities depending on which attack type is used. The first possibility was that the IMSI catcher opens up a new cell and the second one was that it replaces a formerly existent cell. In the first case parameters can be chosen in a consistent way although a new CID has to be chosen, as the CID needs to be unique. In the second case all parameters can be copied from the original cell. Both possibilities can be resolved by adding outside knowledge to the ICDS thus circumventing the problem of other parameters being forged. This is done by rules called *Database Rules*.

Table 3.5 shows the rules that each handles one of these cases. The first case is the easier of both. We know that the catcher cell has a new CID that has not been there before. Therefore the *Cell ID Database Rule* has two different means to exploit this fact:

Rule	Functionality
rx Change	Watches out for changes in reception.
LAC Change	Watches out for changes in LACs.

Table 3.6.: Scan Rules implemented inside the ICDS.

- A database of CIDs can be learned by the ICDS beforehand. This can be used to detect new CIDs that have not been seen before.
- A commercial or public CID database can be used to compare against the CIDs found by the ICDS. A web service also offered by most providers of Cell ID databases.

The three largest Cell ID databases are the two commercial ones by Ericson¹ and combain² as well as the free alternative OpenCellID³ [31]. Ericson and combain have trial modes, where the first 1000 requests are free for developers afterwards a subscription or a fee per request must be paid. Another free alternative with a large coverage is Google Mobile Maps, that also offers a web service where CIDs and their respective LAIs can be checked against their database to obtain localisation information (or simply check if they are part of the database). By adding this information new cells can be identified.

The second attack type where an existing cell is replaced is a bit more complicated since its parameters are an exact copy of the old cell. Attacking by replacing a cell works in a way that the cell with the worst reception is targeted. That way when the IMSI catcher finished replacing it, the reception goes up a significant amount and the mobile phone will move over to that cell. The difference in reception can be used to identify this kind of attack. In general the reception cannot be used well as a parameter because shadowing and reflection can substantially change the reception from one moment to the other. However if reception intervals are logged for a fixed location like an office then important calls made from that specific location can be protected against this kind of attack. To that end the ICDS can monitor reception levels to build up databases with information on the reception intervals of the cells in different, fixed locations. The *Local Area Database Rule* then checks if reception levels differ significantly for a given location.

Scan Rules

At this stage, if local information is present, an IMSI catcher should be identified with a high probability. However if local information has not been gathered in advance, the

¹Ericson Labs, <https://labs.ericsson.com/apis/mobile-location/> [Online; Accessed 04.2012]

²Mobile Positioning Solutions, <http://location-api.com/> [Online; Accessed 04.2012]

³OpenCellID, <http://www.opencellid.org/> [Online; Accessed 04.2012]

main idea of Database Rules can still be applied. In contrast to the other three categories of rules mentioned before, *Scan Rules* evaluate parameter changes over time. This means parameters are being monitored over the duration of one or multiple sweep scans and changes are noted. The *rx Change Rule* builds upon the same idea as the *Local Area Database Rule*, only applied to a scan to scan basis. Changes in reception are evaluated against the last known reception level for each base station.

When watching for parameter changes the LAC is another interesting parameter. If a mobile phone connects to an IMSI catcher due to its better reception level the mobile phone will not immediately announce itself thus the IMSI catcher has no knowledge that a new subscriber connected to it. A mobile phone announces itself by sending Location Updates to the network, this is only done when a certain timeout is reached or when the phone enters a new LA. Since this timeout can be very large (the lowest value possible is 6 minutes) an IMSI catcher usually sends a different LAC than the original cell to force the MS to announce itself by sending a Location Update. IMSI catchers showing this kind of behaviour are uncovered by the *LAC Change Rule*

Remaining Issues and Paging

If a catcher is configured in a consistent way, replaces a cell and by chance has an *appropriate distance* from the subscriber that is its target, the ICDS will not unveil it up to now if it also chooses to maintain a non-suspicious neighbourhood list and shows the patience to wait for the MS to announce itself, e.g. not changing the LAC. *Appropriate distance* in this case means that the distance is chosen in a way that the reception of the catcher does not differ significantly from the reception of the original base station.

An IMSI catcher is not part of a provider's network, it is merely a proxy for a base station. At best it can route calls into a network but it cannot take calls that are intended for a subscriber and route them. Therefore an IMSI catcher will not page connected subscribers while a normal base station will have a very high number of pagings depending on the number of subscribers that are connected. This is a significant difference between a catcher and a regular base station.

This is an additional information that can be used to identify an IMSI catcher. The program `pch_scan` tunes the Motorola C123 to the PCH of a particular base station and gathers Paging Messages and IAs. If no Paging Messages could be collected during longer period of scanning it is a strong indicator towards being confronted with an IMSI catcher. Additionally when IAs are found the scan extracts whether the assigned channel is a frequency hopping channel or not. Since frequency hopping is considered a security feature by providers, all German providers always assign frequency hopping channels. An IMSI catcher however may not support hopping since it does not have multiple frequencies at hand.

The *PCH Scan* feature has not been implemented as a regular rule since each given base station needs some time to be scanned. If that would be done on a regular basis for

every station that has been discovered it would delay the whole scan by a large amount of time and the interval between re-evaluations would be very high. Therefore it was implemented as an extra feature to be used when needed. The ICDS also uses this method on particularly filtered base stations in *User Mode* as will be explained in Section 3.3.4.

3.2.3. Base Station Evaluation

All the rules are evaluated for each base station. Aggregation of these rule results into a single result is done by modules called *evaluators*. Currently there are three different evaluators implemented inside the ICDS, with varying degrees of customisability.

- **Conservative Evaluator:** This is a worst-case evaluator. It iterates over all the rule findings and yields the most concerning finding as its result. By default this evaluator is enabled in the system.
- **Weighted Evaluator:** Using this evaluator the user can give a weight to each rule. This way rules that are more important to the user can have a higher impact on overall evaluation.
- **Grouped Evaluator:** With this evaluator rules can be grouped together. Inside each group the result for the group is found by majority vote whereas the final result is conservatively found by comparing all the group results.

The different kinds of evaluators can be used to tweak the whole system more to a specific environment or purpose, if specific rules are given more weight. They are meant more for experimental purpose if the ICDS is used as a toolbox for analysing base stations, to give more freedom in use to the operator. In case of the system being used in *User Mode* or for the sole purpose of finding whether an IMSI catcher is active or not, the conservative evaluator should almost always be the evaluator of choice and tweaking should be done on the rule parameters rather than on the evaluator.

After a result has been determined for each station, all the results are again aggregated into a final result. The overall result depends on which mode the ICDS is used in. If it is used as analysis tool the final result will be a conservatively aggregated result over all the stations in the list. If the ICDS is run in *User Mode*, which is the mode an end user would use the system in, the ICDS looks up the provider the user has entered, filter out the base station with the best reception for that provider and yield its evaluation as final evaluation. This reflects the fact that a subscriber cannot choose the BTS it connects to, since the ME will always connect to the best base station available for its given provider.

3.3. Implementation

This section will discuss some technical aspects of the ICDS software itself. The first section focuses on architectural aspects and how the architecture can be extended whereas

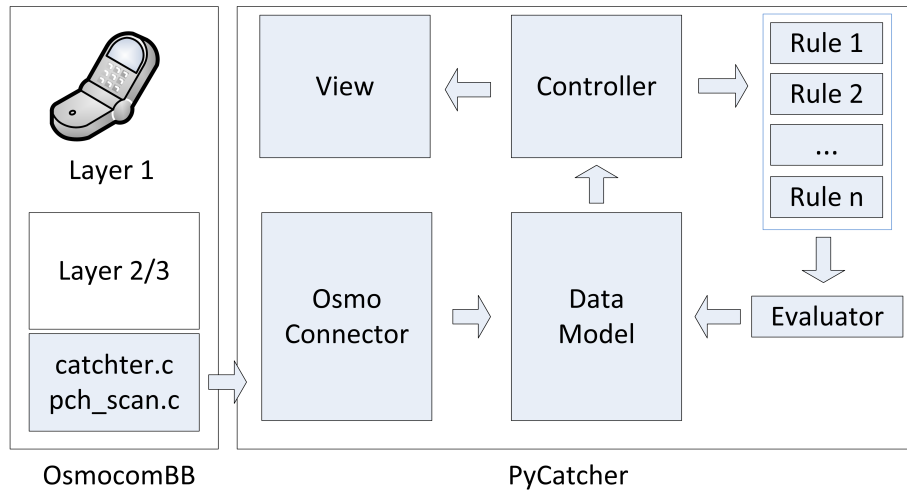


Figure 3.7.: System architecture of the ICDS. The arrows indicate the flow of data.

the second and third section will then explain how to configure and operate the application.

3.3.1. Architecture

Figure 3.7 shows a diagram describing the system architecture, the modules in light blue have been implemented for this project. The application consists of two main parts. One part, the `catcher`, is implemented inside the OsmocomBB framework, the other part, *PyCatcher*, is a Python application that uses `catcher` and `pch_scan` to harvest information and evaluate it afterwards. Since the way these two sub-programs work has already been described in Section 3.2.1 this section will focus on the Python application part.

As mentioned before Layer 1 of the GSM stack is implemented in the firmware running on the Motorola C123. Layer 2 and Layer 3 are implemented on the computer and are used by the `catcher` and the `pch_scan` software to harvest information from the BCCH and PCH respectively.

The PyCatcher application was designed with a Model View Controller (MVC) approach in mind to make it easy to implement new functionality. The MVC pattern is used to separate the data model of an application from the logic as well as from the way it is presented to the user. That way each of the different components can be exchanged without affecting the other two. An additional module has been added, the *OsmoConnector* that is loaded by the controller and spawns `catcher` as a child process. It takes the output back in and transforms it into an object oriented representation of the discovered base stations. These are then handed over and update the data model. This way it


```
dictionary = {
    'key_1': value_1,           #single value
    'key_2': (value_2,value_3) #value range
    'key_3': [value_5, value_6] #list of values
}

variable = value_7           #simple variable
```

Figure 3.8.: Configuration Dictionary in the settings file.

can be ensured that only coherent and complete information is incorporated in the data model. Another benefit is that the parsing module is isolated from the main program logic. `OsmoConnector` is also the module that spawns `pch_scan` when requested by the controller.

The *controller* is the main part of the program and instantiates all the other modules. It loads data from the model, triggers the evaluation and sends the results to the view to be displayed. As discussed before there are several rules that can be evaluated for each base station. These rules are stored within the controller and can be enabled or disabled by using the view that relays new rule configurations back to the controller to be applied. Whenever a new evaluation is requested the controller evaluates the active rules and gives the results to the active evaluator, afterwards the results are send to the view for display to the user. Note that all the structures used are view independent, this way the current view could easily be exchanged with a web interface for example.

The *view* in this project consists of a GTK3¹ window with several forms for user input. It is bound to the controller using PyGTK². Details on the view and how to use it will be explained in Section 3.3.3.

Rules and evaluators were designed in a plugin fashion, since these are the main points where the program can be enhanced and new ideas can be realised. Implementing a new rule or a new evaluator works by extending the rule or evaluator base class and implementing one method inside the derived class that contains the actual logic. After that they only need to be added to the list of evaluators and rules included inside the controller. Appendix C.1 gives an example of how this can be done.

3.3.2. Configuration

The configuration of the system is done in the file `settings.py`. All configuration is done within the python language, where each module has its own dictionary inside which

¹The GTK+ Project, <http://www.gtk.org/> [Online; Accessed 06.2012]

²PyGTK, <http://www.pygtk.org/> [Online; Accessed 06.2012]

it can have an arbitrary number of parameters with their respective values or if only few parameters are required they are read in as simple variables. Figure 3.8 shows an example with the four common expressions used for parameters in this project.

The file consists of five main sections. The first one contains parameters that are needed for the correct operation of the ICDS system and have to be edited depending on the environment:

- `Device_settings`: The setting for the mobile phone that is used. In case the Motorola C123 is used, this section does not need to be edited.
- `Osmocom_lib`: The path to the folder that contains the OsmocomBB framework.
- `Commands`: This is only to be edited when a newer version of the framework is used and the folder structure has changed since the release used in this project.

The second and third sections contain parameters for the different rules and evaluators. This is followed by a section to set some general parameters for the `pch_scan` tool and a section where the locations of the different databases can be changed. A completely documented configuration file with all the rules and evaluator parameters can be found in Appendix C.2. The file is read in as a python file. This way python code can also be used to change settings dynamically depending on the environment or how the ICDS is started.

3.3.3. Graphical User Interface

The ICDS main application has to be started with root privileges since it needs to work with Unix sockets and open up connections to the Motorola C123. This should be done by starting up the `main` class that initialises everything else.

```
sudo python /path-to-project/Src/PyCatcher/src/main.py
```

After a brief loading time the main window shown in Figure 3.9 will appear if a valid configuration is set up.

The different elements shown in the main window are:

1. **Firmware Loader**: This button is used to load the OsmocomBB firmware onto the Motorola C123. For this to work, the mobile phone must be connected correctly to the computer and available on the configured `tty` interface. After pressing the button on-screen instructions will lead the user through the process of flashing.
2. **Scanner**: This starts the `catcher` subprocess in the background and fills the data model with information on the discovered base stations. During this process the Base Station List (11) and the Base Station Graph (13) will also be populated in realtime. Re-evaluation on all base stations is done for every new BTS that has been found.

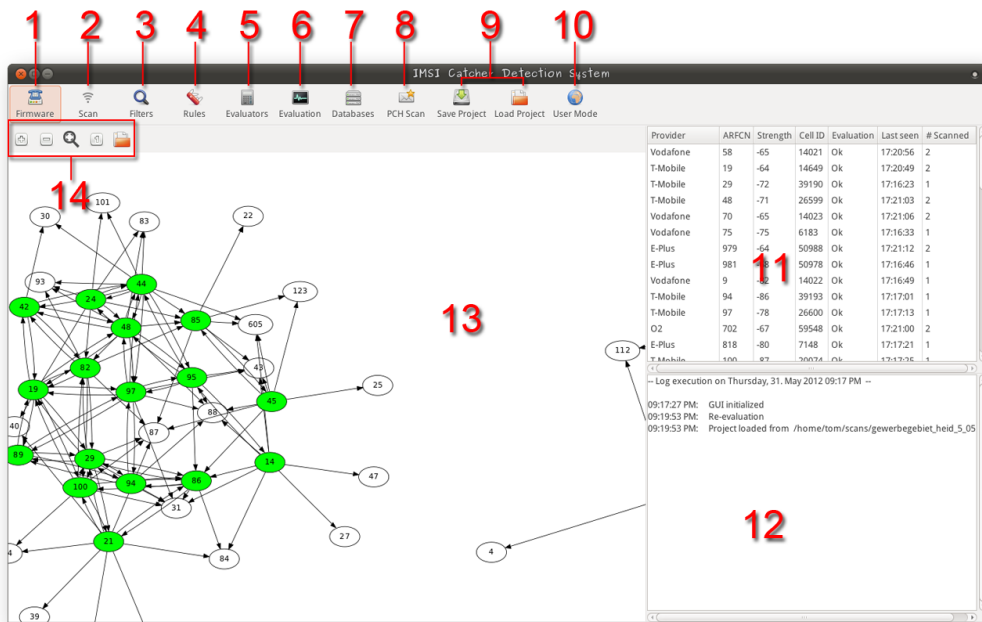


Figure 3.9.: The ICDS main window.

3. IMSI Catcher Detection System

3. Filter Window: This brings up the window shown in Figure 3.10(c), where different view filters for the Base Station List and the Base Station Graph can be set. Note that these filters do not modify the underlying data model or the behaviour of the scanner, they merely manipulate the view. Hidden base stations will be scanned and added to the data model independent from the filters set, so they can be viewed at a later point if necessary. Available filters are:

- Provider Filter: Takes a comma separated white list of providers that should be shown.
- ARFCN Filter: Takes a range of ARFCNs to be shown.

These two filters can arbitrarily be combined together. Filters are designed the same way as rules and evaluators, a new filter can be implemented by derivation of the base class.

4. Rules Window: All the rules implemented inside the ICDS will be brought up with a check box to enable or disable these rules. Disabling means that they will not be considered for the evaluation of a base station. A screenshot can be seen in Figure 3.10(b). If rules are changed during a sweep scan, everything will be re-evaluated according to the new rules set without interrupting the scan.
5. Evaluator Window: This window will let the user choose which evaluator already discussed in Section 3.2.3 to use for BTS evaluation. Choosing a new evaluator will also trigger a re-evaluation of all the data collected so far.
6. Evaluation: This button brings up a separate window showing only the final evaluation of the scan. The final evaluation shown in this dialog *will* be affected by the filters set. Base stations that are filtered out are not considered.
7. Databases Window: The window shown in Figure 3.10(a) contains settings for all the databases the ICDS uses. These settings are mandatory if the Local Area Database Rule or the Cell ID Rule is going to be used. It is also possible here to export the current scan as a Comma Separated Value (CSV) file or a Sqlite database to be used in other programs.
8. PCH Scan Window: This button brings up the dialog illustrated in Figure 3.10(d) in which an ARFCN or a list of ARFCNs can be scanned to discover Paging Messages and IAs on the PCHs. The timeout sets the duration of a scan. Results of the scan will be shown in a list in the lower part of the window after the scan is finished.
9. Save/Load Project: The current state of the application can be saved as or loaded from a `.cpf` file. This enables the user to continue a scan at a later time or to compare different data sets scanned at different points in time or locations with one another.

10. **User Mode:** The ICDS is ultimately meant to be a tool that can be used by end users to check whether it is safe to initiate a phone call or not. This dialog presents a way the already configured tool could be shown to end users. Only the provider is to be entered and a final evaluation will be returned once the ICDS is done with the process.
11. **Base Station List:** This list gives an overview of which base stations have been discovered so far along with some distinguishing information including its evaluation. A detailed view of a base station can be brought up by selecting it in the list and pressing the enter or return key. The report is separated into four main parts, the first being all the harvested parameters, followed by findings the different rules and evaluators yielded and a section with the raw uninterpreted system information data.
12. **Log Window:** Every important event inside the ICDS is reported in the log together with a time stamp when it occurred.
13. **Base Station Graph:** This graph displays the base station found in the Base Station List (11). A node represents a single BTS and is labelled with its respective ARFCN. An edge from node *A* to *B* is drawn if node *B* occurs in the Neighbouring Cells List of *A*. Nodes with a white background have only been found inside Neighbouring Cell Lists but not yet by the ICDS scanner itself whereas nodes with a red, yellow or green background have been found and evaluated with the colour representing either a critical, a warning or an ok status respectively.
14. **Graph Controls:** These are meant to make navigating the graph a bit easier. From left to right the functionality is zoom in, zoom out, fit the whole graph to the viewport and display the graph in original size. Zooming can also be done with the mouse wheel and it is possible to drag the graph around by clicking and holding it with the mouse and then moving it in the desired direction.

3.3.4. Usage

This section will list some common use cases and explain how to setup and operate the system to achieve the desired result. Button numbering refers back to Figure 3.9.

Conducting sweep scans: This is the normal mode of operation, scanning and evaluating all base stations in the perimeter. This is also used for gathering various kinds of information to be used for analysis later. At first the firmware needs to be flashed onto the device by pressing (1). After the flashing process is finished the scan can be started by pressing (2). Either before or during the scan (3),(4) and (5) can be used to customise the output or rules that should be considered during evaluation. The scan can be stopped

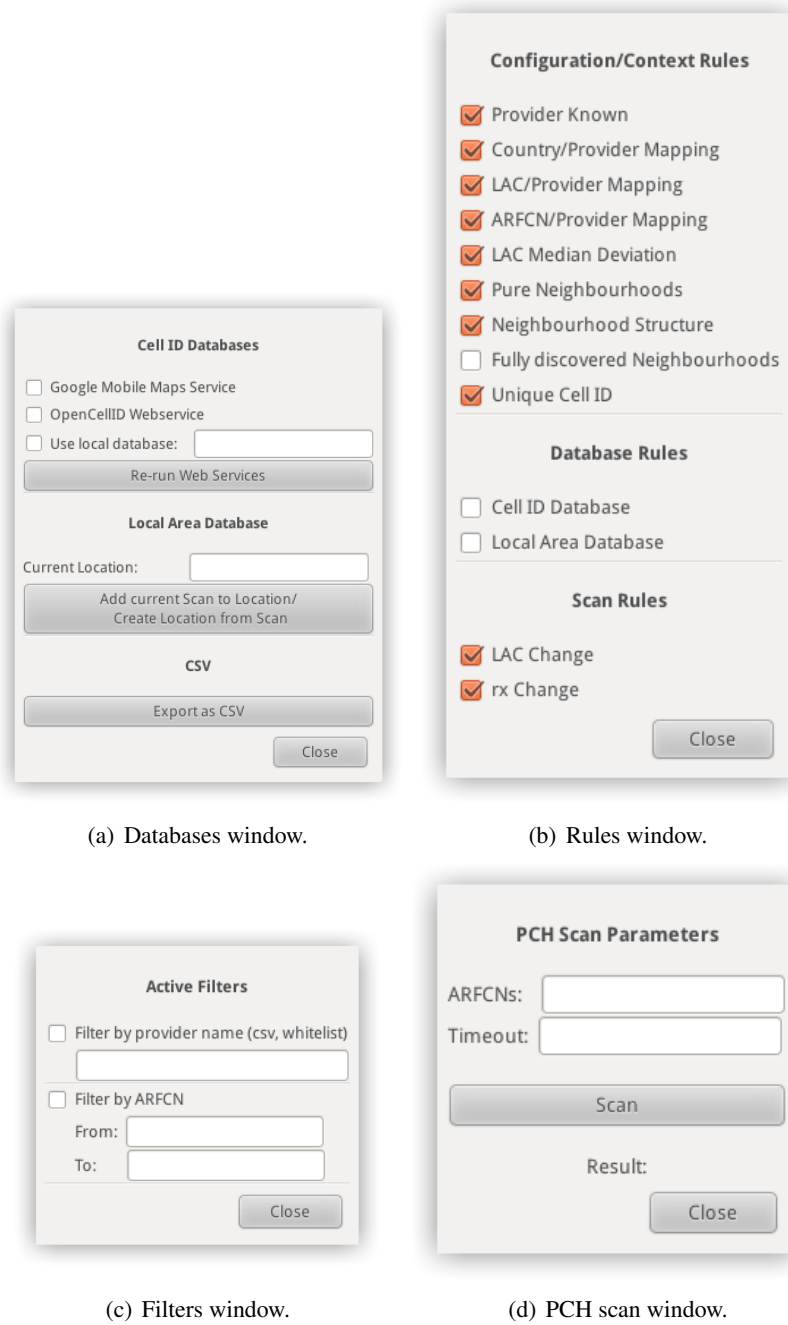


Figure 3.10.: Dialogs for different settings.

at any time. Resuming the scan will renew the information in the Base Station List. The scan will continue renewing information until it is terminated by the user. The number of times a specific BTS has been scanned is shown in the *Sightings* column of the Base Station List.

Using and obtaining Cell ID Information: CID information can be obtained through several different means. The Databases window shown in Figure 3.10(a) can be brought up by pressing (7). In the upper part settings concerning the acquisition of CIDs can be found. The operator has the choice between three different methods which can also be used in combination. *Google Mobile Maps Service* compares the stations' CIDs and LAIs to the ones in the Google database. If they are found they are marked as such and additionally their location information will be set. *OpenCellID Web Service* performs the same task if activated. As of now OpenCellID has a very low coverage compared to Google's service but it has been included since it is an open source approach that is in development and updated constantly. The *Use Local Database* feature allows to use a previously build Local Area Database as Cell ID Database for lookups. For this purpose the location to be used as database has to be entered in the textfield, e.g. 'office' or 'home'. Offline lookups can be done that way, which are considerably faster than online lookups, the raw data used by the OpenCellID project can also be downloaded and used as a offline version for reference that way. Since these lookups take some time if performed using webservices, this is not done while the scan is taking place, to not delay the acquisition of information from new base stations. Pressing the button below the checkboxes will add the Cell ID Database information from the selected sources to all the stations currently in the base station list. If more than one service is activated lookups will be done starting with the Google service, if active and using the next one in line only if the previous lookup failed. Having at least one service activated and run on the base station list is a precondition for the Cell ID Database Rule to work.

Building or using a Local Area Database: Having set up the correct location in the *Current Location* field of the databases window and having a valid database for that location are preconditions for the Local Area Database Rule to work. To build up a database for a specific location a sweep scan for this location has to be done. After the sweep scan is finished, the current location has to be set in the dialog and the button for adding / updating the database has to be pressed. If there was no existing database for that location it will be created, otherwise the database will be updated with the new information acquired by the sweep scan. To enhance the quality of a Local Area Database it is recommended to do multiple sweep scans and integrate them rather than relying on a single scan only. This raises the probability that all BTS in the perimeter are found is higher and it solidifies the interval in which the base station signal strength varies.



Figure 3.11.: The User Mode window.

Conducting a PCH Scan: A PCH scan can be conducted in addition to a sweep scan or as a standalone method therefore no scan data needs to be present. The first parameter is a comma separated list of ARFCNs that will be scanned. The second parameter is the timeout. A scan for a particular ARFCN will tune in on the PCH of each ARFCN given and wait there until the timeout is reached gathering all paging messages and IA that are sent in that time interval. In the lower part of the dialog, after the scan has finished, the statistics for the scanned BTSs will occur.

Utilising User Mode: Data needs to be present inside the ICDS either by loading a project file for the corresponding location the system is used in or by having performed a sweep scan in advance. There is only one input field in the dialog as Figure 3.11 illustrates. The user has to enter the provider name in this field and push the *Start Evaluation* button. From the scan data, the ICDS extracts the base station with the highest reception for the given provider since this would be the station a MS would connect to if started up. It then performs a PCH scan on that station and accumulates the results from this additional scan with the data from the sweeps scan in a conservative manner. Timeouts and retry attempts are taken from the PCH scan dialog. Any adjustment made there will carry over in User Mode.

After the evaluation has been completed, the picture on the bottom will change to reflect the result found.

3.4. Related Projects

IMSI catcher detection is a topic that has not emerged until recently therefore not a lot of work and research has been done upon that topic. This is mainly due to the fact that it was very hard to get information from the mobile network onto a computer for evaluation. A fact that changed, or to be exact is now more accessible due to the OsmocomBB framework.

About the same time as this project, in December 2011, another project was announced with the same goals of detecting an IMSI catcher. The project is called 'Catcher Catcher'¹ and also builds up on the OsmocomBB framework. The goals are the same however the means are very different. As a codebase 'Catcher Catcher' uses the `mobile` application, a software that implements the firmware part of a mobile phone. This results in an active approach to IMSI catcher detection. An active connection is established between the phone and the base station in question. One could say they try to identify the catcher by letting a bait phone get caught by it.

The advantage compared to the passive approach this project uses is that one has more sure means at hand of identifying a potential catcher. Features that are already implemented are[20]:

- Encryption: Check whether encryption is enabled when doing a phone call.
- IMEI: IMEI is not requested in Cipher Mode Complete message.
- LAC: LAC of a base station changes.
- Location Updates: IMEI is requested during Location Updates.
- Silent Text: Checks whether a silent text message is received.
- Call Setup: Do not receive a Call Setup message while being on a traffic channel for two seconds.

As one can see, missing encryption and reception of a silent text message are very strong indicators of being connected to a catcher. This however comes at the cost of being discovered oneself. Additionally if the IMSI catcher is configured only to allow specific IMSI numbers an active approach cannot be used to evaluate it.g

It is not clear whether the project has been abandoned since December 2012 or whether it is developed further. Activity on the wiki has seized after December 2012.

¹Catcher Catcher Wiki,
<http://opensource.srlabs.de/projects/catcher/wiki/Tutorial> [Online; Accessed 05.2012]

4. Evaluation

The following chapter presents the results of the experiments done with the ICDS. Evaluation has been done in different areas to give a complete impression of how the ICDS performs. In the first section some general findings will be described that affect overall performance. Afterwards the test environment and setup of the IMSI catcher is discussed. The last two sections evaluate the ICDS against a configured catcher. At first the individual Rules are tested, then the two attacks described in the theory section were conducted.

4.1. Performance Evaluation

In order to evaluate general performance it has to be considered that the ICDS can be deployed in different environments. To reflect different compositions and densities of base stations from different areas, four distinct data sets will be used for the experiments in this section. The data sets have been taken in areas surrounding the city of Freiburg. Table 4.1 shows some of the data sets' key values.

Apart from nodes of the four German GSM providers E-Plus, T-Mobile, Vodafone and O2, nodes from the Deutsche Bahn also occur in these scans. These nodes form a private network used for internal communications by the Deutsche Bahn. They are identified by their broadcast name *DB Systel GSM-R* and their frequency which is in a range registered to the Deutsche Bahn. Since the distribution of these nodes is very sparse, only one node can be found in each scan. They yield a false positive for no neighbouring nodes

Name	Description	Number of BTS	Scan Duration
cdb	CBD around the area of Bertholdsbrunnen	54	6:13
airport	Airport and university area around Georges Koehler Allee	68	6:25
ind_park	Industrial park Haid in Freiburg West, Hausener Weg	53	4:52
house_area	Housing area at the rim of Freiburg Zähringen, Thuner Weg	22	3:59

Table 4.1.: Key values of the data sets used for performance tests.

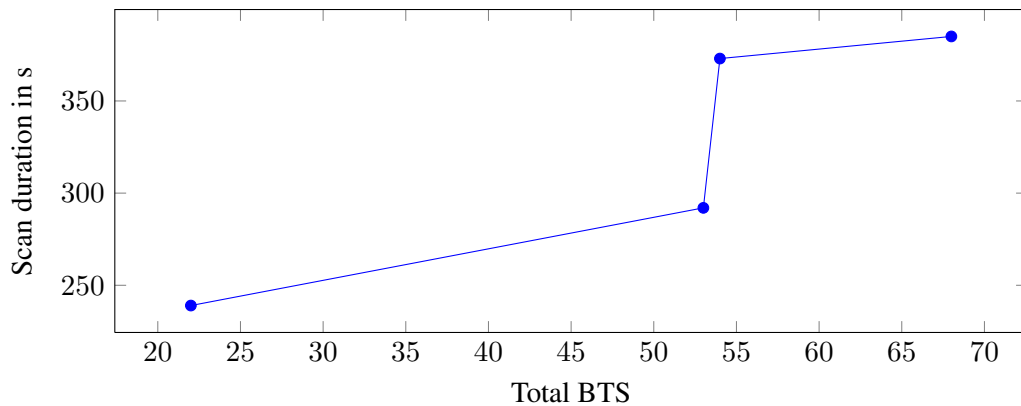


Figure 4.1.: Scan durations for the sample data sets.

can be discovered. These nodes are not relevant to subscribers because they are not able to connect to them. Therefore they will be ignored and factored out for the remainder of this evaluation.

4.1.1. Scan Duration

Table 4.1 shows that the time needed for a sweep scan in the Freiburg area can differ by large amounts depending on how many base stations have been scanned. Generally said it takes longer the more dense the base station distribution is in the area. This is however not the only factor, as Figure 4.1 visualises. If the scan duration would only depend on the number of base stations scanned, a linear growth could be expected.

There is a large increase in scan duration between the `ind_park` and the `cbd` data sets although only one more base station was detected. This jump can be explained considering the context of the scan. The scans were done on a Saturday between 14:00 and 16:00. The Freiburg CBD was crowded at the time of the scan as was the university campus due to an event held there. In contrast the industrial park area was very calm, as was the housing area. Whenever the ICDS discovers a BTS it needs to wait until all System Information messages are gathered before it can continue scanning for further base stations. In a crowded area reception is far worse due to radio inference therefore it takes longer to accumulate the information needed resulting in increased scanning times.

A crowded area with high density of BTSs could be seen as a worst case for scan duration. Re-evaluation of a base station based on its own parameters thus occurs only every 7 minutes in this worst case scenario. This is an inherent problem to the approach of scanning and updating all base stations and not only monitoring a subset belonging to a single provider. If an IMSI catcher replaces a base station directly after it was scanned, it could take up to 7 minutes until it is discovered. To lessen this threat, if the ICDS is used

	cdb		airport		ind_park		house_area	
	Cov.	Time	Cov.	Time	Cov.	Time	Cov.	Time
Google	1.00	5	0.99	8	1.00	5	1.00	2
OCID	0.57	51	0.58	68	0.58	55	0.41	19

Table 4.2.: Coverage for Google Mobile Maps and OpenCellID on the data sets with the time needed in s for fetching the information.

in User Mode, the base station with the strongest reception is scanned again, to eliminate the possibility of having been taken over and not being detected.

4.1.2. Cell ID Databases

The usefulness of the *Cell ID Rule* is subject to the completeness of the database that is used. That is even more so since a database with a low coverage will yield false positives, e.g. legitimate base stations will be evaluated as being IMSI catchers because they are not found in the database.

The coverage for the OpenCellID database and the Google Mobile Maps service evaluated against the data sets can be seen in Table 4.2. Google Mobile Maps service scored a complete coverage on all the data sets while Open Cell ID could cover about half the nodes in the different sets. The reason the Google service had only a 99% coverage on the `airport` data set is that base station that has not been found was the one operated by the chair of communication systems, therefore it can be factored out. The OpenCellID database is not a good source of information for this project as is shown by its coverage scores. However it must be said that these two services are intended for localisation and thus do not have the demand to yield a complete coverage of all the base stations in the area. Therefore it must be kept in mind when using this Rule for analysis that false positives might still be brought forth. What can be said though is that a base station that has been found may only be subject to a type of attack that replaces an existing base station and can thus be investigated more specifically.

4.1.3. PCH Scans

In order to establish a baseline on what to expect from the PCH scans different measurements have been done. Table 4.3 shows scans that have been done in three different areas. In each area the cell with the strongest reception for each provider was chosen as a representative for the respective provider. The duration of each scan was set to 60 s, while the values in the table have been averaged for 10 s since this is the unit the ICDS is using.

A comparison of the results suggests that the different providers also have different policies when to page. Vodafone has about six times the paging rate O₂ has but only half

4. Evaluation

	house_area		cbd		airport	
	Pagings	IAs	Pagings	IAs.	Pagings	IAs.
T-Mobile	89	3	75	3	109	4
E-Plus	119	1	67	2	70	1
Vodafone	776	6	720	5	712	6
O2	117	9	106	16	94	11

Table 4.3.: Number of Pagings and Immediate Assignments (per 10 s) for the four German providers at different locations.

the Immediate Assignments.

Another scan was also done on the IMSI catcher. No Paging Messages or Immediate Assignments were detected although MSs were connected to it. That was to be expected as formerly discussed in Section 3.2.2 because the IMSI catcher is not actually part of the providers network and thus cannot receive and forward paging requests.

4.2. IMSI Catcher Detection

Before using an IMSI catcher for testing purpose or a launching an OpenBTS base station it should be ensured that licenses for the specific frequencies that are used, have been obtained. This way it can be ensured that the operation does not interfere with regular radio communication. Extra care should be taken when configuring the IMSI catcher to simulate a real base station to reject incoming connections when the experiments are not done within a radio sealed room. Otherwise subscribers might get caught by the catcher and might not be able to initiate calls. How this can be done for the Open Source IMSI Catcher that is used to test the ICDS is explained in the next section.

4.2.1. Open Source IMSI Catcher

Some of the Rules cannot be tested without an active IMSI catcher. For this purpose the Open Source IMSI Catcher [30] is used.

This project builds up an IMSI catcher using only Open Source systems and freely available hardware so it can basically be used by anybody. On the hardware side a computer running a Linux operating system is used, as well as the Universal Software Radio Peripheral (USRP) as the radio transmitter. The USRP allows the signal processing for radio transmissions to be done in software, therefore it can be used for a multitude of purposes and protocols. Some hardware modifications have to be done to the device to empower it to send and receive data on the frequency bands used for GSM communication. An external clock needs to be used since GSM operations are very time critical.

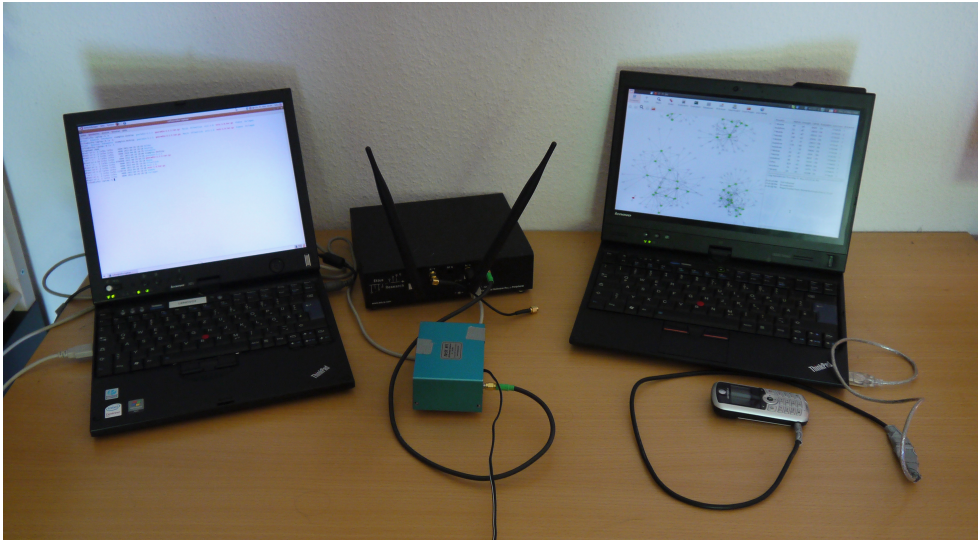


Figure 4.2.: Open Source IMSI Catcher (left) with USRP (black) and external clock (blue) and the ICDS (right) with the Motorola C123 connected.

Figure 4.2 shows the Open Source IMSI Catcher and the ICDS side by side.

On the software side GNU Radio¹, OpenBTS² and Asterisk³ are used to achieve the functionality provided by a IMSI catcher. The raw data that is received by the USRP is sent to the GNU Radio component which works as a software side interface to the USRP. This data is taken by the OpenBTS software that simulates base station behaviour and has an integrated module simulating a VLR and handing out TMSIs. OpenBTS implements an open source version of the GSM stack with the goal to provide cheap access points to the GSM network in areas with bad coverage. The user accounts as well as encoding of voice data and recording of calls is handled inside the Asterisk software, basically combining the TRAU, HLR and authentication centre of a real GSM network. Calls are routed from here on to the Voice over IP (VoIP) network of the university.

Since we do not want to actually connect to the IMSI catcher, the Asterisk part and user configuration will be omitted here. The parameters necessary to simulate a GSM cell have to be set inside the `OpenBTS.conf`. Figure 4.3 shows an annotated example for a configuration simulating a T-Mobile cell. `Control.OpenRegistration` is explicitly set to 0 which prevents anyone from connecting to the IMSI catcher since connections are not part of the test and we do not want to interfere with other peoples'

¹GNU Radio Project Wiki, <http://gnuradio.org/redmine/projects/gnuradio/wiki> [Online; Accessed 05.2012]

²OpenBTS Project Wiki, <http://wush.net/trac/rangepublic> [Online; Accessed 05.2012]

³Asterisk, <http://www.asterisk.org> [Online; Accessed 05.2012]

4. Evaluation

```
#Do not let people connect
Control.OpenRegistration 0

#Basic cell parameters
GSM.MCC 262                GSM.ARFCN 54
GSM.MNC 01                 GSM.ShortName T-Mobile
GSM.LAC 29184
GSM.CI 61858

#Transmission strength ranging from 0 to 23
GSM.PowerAttenDB 20

#Neighbouring cell list, space separated
GSM.Neighbours 69 53 20

#Force location Updates, multiple of 6 minutes
GSM.T3212 1
```

Figure 4.3.: Excerpt of a `OpenBTS.conf`.

communications in the area. More precisely this will only let users connect that have been set up in the `sip.conf` of the Asterisk server. Only the test phone does have a valid account.

Modifications to the ICDS Configuration

A few small modifications have to be made to the configuration of the ICDS to not instantly evaluate the university base station and the IMSI catcher as *Critical*. The configuration of the *ARFCN/Provider Mapping Rule* has been changed to include the ARFCN 877 as valid ARFCN for each provider since this is the frequency that we are allowed to send on. In one experiment this rule was tested by faking a T-Mobile station on ARFCN 50. This experiment was done in a radio sealed room.

4.2.2. Rule Evaluation

With the environment set up we will now evaluate the individual Rules. The IMSI catcher was launched with the four different configurations shown in Table 4.4. With each of these configurations the ICDS detected the catcher for various reasons:

- Config 1: For this configuration the ICDS detected that ARFCN 50 is not in the

	Conf. 1	Conf. 2	Conf. 3	Conf. 4
ARFCN	50	877	877	877
ShortName	T-Mobile	Vodafone	E-Plus	O2
MCC	262	262	262	505
MNC	01	02	03	07
LAC	21010	793	588	50945
Cell ID	1	2	3	4
Neighbours	—	10,11,12	695, 20	1022, 1001

Table 4.4.: Erroneous configurations for the IMSI catcher.

range registered to the provider T-Mobile. Apart from that the LAC differed from the ones found in the Freiburg area and thus different from the neighbouring LACs. The neighbouring cell list was also empty which is a strong indication for an IMSI catcher. An interesting fact to be noted here is, when an empty neighbourhood list is given to OpenBTS it still transmits a neighbourhood list containing the element '0'. *The Neighbourhood Structure Rule* triggered nevertheless since no other T-Mobile station in the area had ARFCN 0 as a neighbour, nor was it discovered during the scan.

Rules triggered: LAC / Provider Mapping, Neighbourhood Structure, ARFCN / Provider Mapping, LAC Median Deviation

- Config 2: The detected errors within this configuration are that none of the neighbours mentioned was in range to be detected, which is very unlikely for a normal base station.

Rules triggered: Neighbourhood Structure

- Config 3: In this configuration one of the neighbours, namely 695 is not consistent with the set provider. The base stations breaks up the isolated subgraph for E-Plus and is thus detected.

Rules triggered: Pure Neighbourhoods

- Config 4: The chosen provider is not consistent with the country set. Additionally another warning is thrown since the neighbourhood list only contained nodes that were only found indirectly.

Rules triggered: Country / Provider Mapping, Neighbourhood Structure (warning)

The *LAC Change Rule* and the *rx Change Rule* remain to be tested. For this purpose the procedure was as follows. At first the ICDS was turned on and scanning commenced. Afterwards the IMSI catcher was turned on, operating on the same frequency as a base station that was previously discovered. This was repeated several times with different

4. Evaluation

Config	rx		LAC		rx det.	LAC det.	Time
	Old	New	Old	New			
T-Mobile	-92 dB	-45dB	4711	666	Yes	Yes	6:31 m
O2	-91 dB	-46dB	4711	4711	Yes	No	6:22 m
E-Plus	-89 dB	-41dB	4711	666	Yes	Yes	5:59 m
Vodafone	-93 dB	-41dB	4711	4711	Yes	No	6:35 m

Table 4.5.: Results obtained testing the *rx* and *LAC Change rules*.

configurations of the IMSI catcher. Table 4.5 summarises the findings. The configurations used can be found in Appendix E.1. In all cases the ICDS was able to detect the IMSI catcher after about 6 minutes which corresponds to the time that is needed to conduct a complete sweep scan. These times can vary however depending on the timing of the catcher being turned on and the time it takes for rescanning a base stations as described in the beginning of this chapter.

4.2.3. Long-Term Test

To evaluate the *Local Area Database Rule* a long-term test has been carried out. This has been done to find out whether base stations in the surrounding area change on a regular basis or stay the same (including their respective configurations and reception levels). This is essential for a Location Area Database to be usable over a longer period of time.

The database itself has been built over the course of one week in Freiburg, Georges Koehler Allee. During this period no parameter changes were detected and the reception of base stations only varied inside a very small interval. After that each day for another week, two scans per day were done. One of them while the IMSI catcher was operating, the other without the device present. This was done to evaluate if false positives or negatives occurred using the database and all the methods mentioned above over a larger period of time. The results on a per day basis are summarised in Table 4.6.

4.2.4. Attack Scenarios

Since all the Rules have been tested we assume from this point on that the IMSI catcher is configured correctly, meaning that parameters like the ARFCN, LAC or provider have been set up in correct and consistent way so the respective Rules will not show an alarm. Consistent parameters for the four providers in Germany can be found in Table 4.7. Note that the CID can be a arbitrary value as long as it is unique in the area of reception. CIDs measured from different base stations do not follow any particular schema. The scenarios are built after the attacks described in Section 2.4.1. Local information in terms of a Local Area Database was available.

Date	Time	Catcher	Detected	Detected by	False positives	False negatives
------	------	---------	----------	-------------	-----------------	-----------------

Table 4.6.: Results of the long-term evaluation.

Parameter	T-Mobile	Vodafone	E-Plus	O2
ARFCN	13-49, 81-102, 122-124, 587-611	1-12, 50-80, 103-121, 725-751	975-999, 777-863	0, 1000-1023, 637-723
LAC	21014/21015	793	588/138	50945
MCC	262	262	262	262
MNC	01	02	03	07

Table 4.7.: Consistent parameter configurations in the Freiburg area for the four German providers.

IMSI Catcher as a new Cell

The first scenario will simulate the case where the catcher opened up a new cell with a good reception and forced the MS into normal cell selection mode by disconnecting it from the current base station via a jammer. First the IMSI catcher was turned on, faking a legitimate T-Mobile cell with a new CID. Afterwards the ICDS was started and a sweep scan was performed. As soon as the cell was scanned which occurred very early since the reception was very good (-45 dB) it was detected that this cell was not in the Local Area Database. After the sweep scan CIDs from Google were also fetched. Both the *Local Area Database Rule* and the *Cell ID Database Rule* indicated a *Critical* status.

As a further step to simulate the case where no local information is available, the *Local Area Database Rule* and *Cell ID Rules* were turned off. The ICDS then yielded an *Ok* evaluation since the configuration of the catcher cell was consistent. The next step was to put the ICDS into *User Mode* with T-Mobile as its fixed provider. It selected the IMSI catcher cell as its target cell because of the good reception level and since its evaluation was *Ok* an additional PCH scan was started. No paging messages or IAs were caught so the end result was a *Critical* status for the IMSI catcher cell.

IMSI Catcher replacing an old Cell

The second scenario simulated the attack where the IMSI catcher replaces a base station with a bad reception in the neighbourhood of the cell the MS is connected to. This way the reception drastically improves on that particular frequency suggesting to the MS that the subscriber moved to the close perimeter of that BTS and .

We used the university base station on ARFCN 877 as our target. A sweep scan was conducted with the ICDS and after the base station had been found the IMSI catcher was started on the same frequency.

Due to its strong increase in reception and the change in the LAC the IMSI catcher cell obtained a *Critical* status immediately after ARFCN 877 had been scanned a second time. Also due to this fact the reception level differed too much from the interval that had been measured for this CID in the *Local Area Database* also yielded a *Critical* rating. *User Mode* did not start a PCH scan since the evaluation had already been *Critical*.

5. Conclusion

This chapter will give a short summary of the whole project and its findings. The first section starts by reviewing what has been done while the second section will then bring up some aspects where the ICDS could be improved to yield results either faster or more accurate.

5.1. Summary

The aim of this project was to find ways of unveiling whether an IMSI catcher is being operated in the close perimeter or not. In other words to find out whether it is safe to initiate a phone call or not. The main premise that distinguishes this project from other similar projects like the also OsmocomBB based 'catcher catcher' is that the system is operating in a completely passive manner. Therefore it can only operate on a limited amount of information, namely on information that is broadcasted on publicly available channels. The benefit this yields over other projects is that the IMSI Catcher Detection System itself is completely invisible to the IMSI catcher.

Chapter 2 laid out basic concepts of GSM communication to create a basis for understanding why and how an IMSI catcher works. Some more detailed concepts on the U_m interface were discussed to enable the reader to grasp the concept of logical channels and how they can later be used to harvest information in a passive manner. The chapter concluded with an account of how an IMSI catcher operates by outlining the two main ways of attacking a subscriber — one by creating a new cell for the subscriber to connect to and the other by overtaking an already existent cell.

Chapter 3 started by explaining how the OsmocomBB framework was used to build the ICDS. It concluded with a summary of how to configure and use the system. The two main sources of information, the BCCH and the PCH were introduced along with the different parameters that the ICDS bases its findings on. An outline of how this finding is reached is illustrated in Figure 5.1. At first a sweep scan is conducted or an old project is loaded to supply the ICDS with base information of the surrounding base stations. During the scan or after the data has been loaded the ICDS evaluates different Rules on the data. This can be done with or without consulting databases containing local information. The results show that some IMSI catcher configurations can be uncovered by these Rules which check basic configuration data obtained from System Information messages. In addition to this data broadcasted on the BCCH reception levels and LACs are also mon-

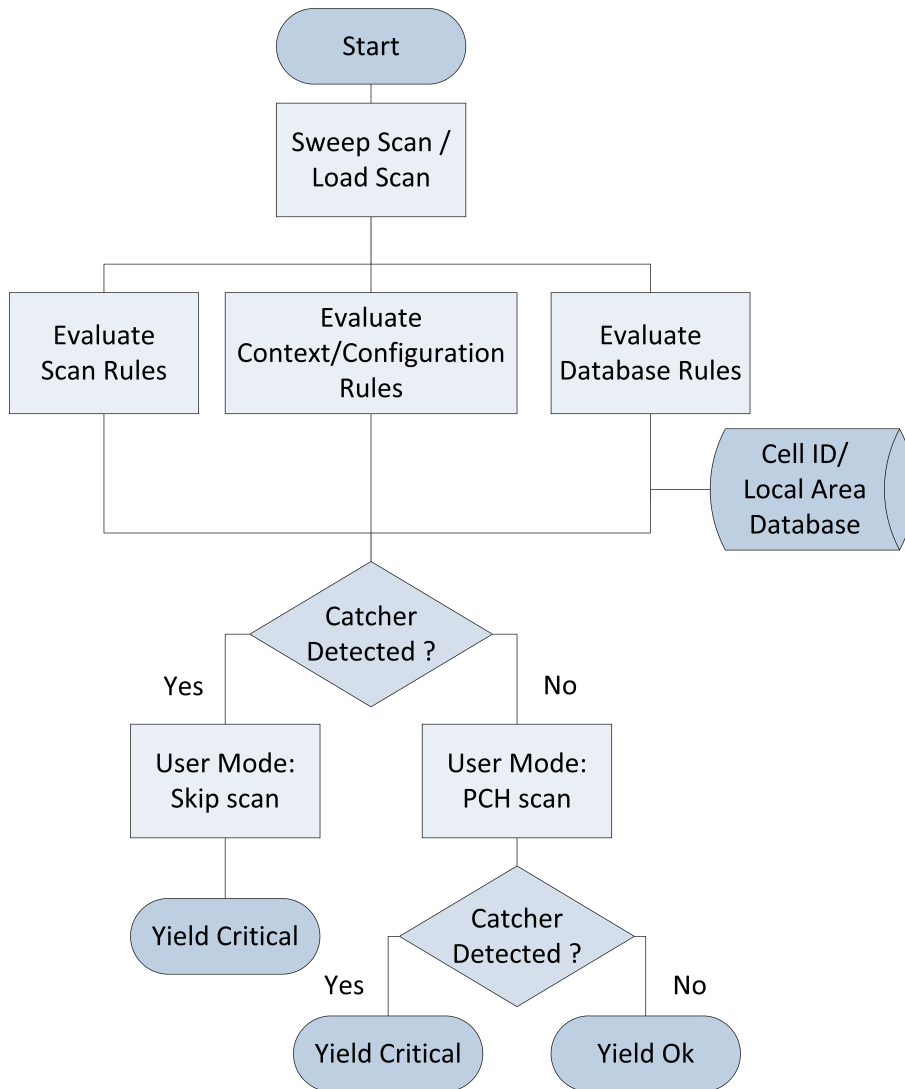


Figure 5.1.: ICDS decision finding process outlined.

itored over time to unveil attacks in which existing base stations are replaced by IMSI catchers. This leaves IMSI catchers that have a consistent configuration and blend well in their surroundings concerning the reception levels. Additionally these catchers do not actively try to make mobile phones contact them by broadcasting a new LAC. To handle this case the ICDS can monitor the PCH of the base station in question to gather Paging Messages and IAs. Since an IMSI catcher is not part of the provider's network no paging messages will be forwarded to the connected subscribers. These findings have been confirmed with the experiments in Chapter 4 where different attack scenarios have been tested. In cases where the ICDS was not able to uncover the IMSI catcher by Rule evaluation the PCH scan yielded the desired result.

5.2. Future Work

There are several ways in which the ICDS could be improved. The experiments showed that one of the main issues is the duration of the sweep scans. If a BTS is replaced right after it has been scanned it can take up to seven minutes until it is scanned again and the IMSI catcher is uncovered. That is the time that is needed to do a complete sweep scan. The ICDS could be refined so that only base stations of a particular provider are monitored so the duration of sweep scans is cut down, this could also be done upon entering *User Mode*.

In case of the Open Source IMSI Catcher no Paging Messages were sent. However it would be possible for a catcher that is aware of this evaluation criterion to send fake Paging Messages to arbitrary TMSIs to deceive the ICDS. To face this the ICDS could be extended. Since Paging Messages would be unreliable in such a case one would have to use IAs. The experiments have shown that this might increase scanning time on the PCH since these messages are much more rare than pagings. An IA sent to a subscriber contains the dedicated channel on which the conversation between the base station and the mobile phone is to continue. At this point the ICDS already uses the information about dedicated channels to see whether frequency hopping is used or not. If an IA is caught by the ICDS one could follow on the assigned channel and catch the Cipher Mode Message. Since an IMSI catcher will disable encryption to tap into calls, the Cipher Mode Message would contain A5/0 as its encryption algorithm. This feature could be used to handle cases of fake Paging Messages or IAs, however it would take longer to conduct the PCH scan. Another problem would be that it requires another subscriber that is connected to the IMSI catcher initiating a call. On the other hand a regular base station using encryption can also be verified this way.

These approaches are not strictly passive since they require another participant to become active. Although not strictly passive the ICDS would still be invisible thus fulfilling the premise of not being uncovered itself.

Bibliography

- [1] Data link (dl) layer; general aspects. GSM 04.05, http://www.3gpp.org/ftp/Specs/archive/04_series/04.05/0405-802.zip, 1999.
- [2] Mobile station - base station system (ms - bss) interface; data link (dl) layer specification. GSM 04.06, http://www.3gpp.org/ftp/Specs/archive/04_series/04.06/0406-840.zip, 1999.
- [3] Radio access network: Radio transmission and reception. GSM 05.05, http://www.3gpp.org/ftp/Specs/archive/05_series/05.05/0505-8k0.zip, 1999.
- [4] Digital cellular telecommunications system (phase 2+): Mobile stations (ms) features. GSM 02.07, http://www.3gpp.org/ftp/Specs/archive/02_series/02.07/0207-710.zip, 2000.
- [5] Identification cards – physical characteristics. ISO/IEC 7810:2003, http://www.iso.org/iso/iso_catalogue/catalogue_tc/catalogue_detail.htm?csnumber=31432, 2003.
- [6] Multiplexing and multiple access on the radio path. GSM 05.02, http://www.3gpp.org/ftp/Specs/archive/05_series/05.02/0502-8b0.zip, 2003.
- [7] Customised applications for mobile network enhanced logic. GSM 23.078, http://www.3gpp.org/ftp/Specs/archive/23_series/23.078/23078-b00.zip, 2011.
- [8] Numbering, addressing and identification. GSM 23.003, http://www.3gpp.org/ftp/Specs/archive/23_series/23.003/23003-a30.zip, 2011.
- [9] CHAUDHURY, P., MOHR, W., AND ONOE, S. The 3gpp proposal for imt-2000. *Communications Magazine, IEEE* 37, 12 (1999), 72–81.
- [10] EBERSPÄCHER, J., VÖGEL, H.-J., BETTSTETTER, C., AND HARTMANN, C. *GSM – Architecture, Protocols and Services*. Wiley, 2009.
- [11] FEDERRATH, H. Protection in mobile communications.

Bibliography

- [12] FOX, D. Der imsi-catcher. *Datenschutz und Datensicherheit* 26, 4 (2002), 212–215.
- [13] Gsm/3g stats. <http://www.gsacom.com/news/statistics.php4>, 2011. [Accessed: 28/11/2011].
- [14] Brief history of gsm and the gsma. <http://www.gsm.org/about-us/history.htm>, 2011. [Accessed: 28/11/2011].
- [15] HARALD WELTE, S. M. Osmocombb - running your own gsm stack on a phone. http://events.ccc.de/congress/2010/Fahrplan/attachments/1771_osmocombb-27c3.pdf, 2010.
- [16] HAUG, T. Overview of gsm: philosophy and results. *International Journal of Wireless Information Networks* 1, 1 (1994), 7–16.
- [17] HEINE, G. *GSM networks: protocols, terminology, and implementation*. Artech House, 1999.
- [18] UE radio access capabilities. 3GPP TS 25.306, <http://www.3gpp.org/ftp/Specs/html-info/25306.htm>, 2011.
- [19] Medium access control (mac) protocol specification. 3GPP TS 25.321, <http://www.3gpp.org/ftp/Specs/html-info/25321.htm>, 2011.
- [20] OSMOCOMBB. Catcher catcher. <http://opensource.srlabs.de/projects/catcher/wiki>, 2011.
- [21] OSMOCOMBB. Motorola c123. http://en.wikipedia.org/wiki/Cell_ID, 2012.
- [22] OSMOCOMBB. Project rationale. <http://bb.osmocom.org/trac/wiki/ProjectRationale>, 2012.
- [23] OSMOCOMBB. Project rationale. <http://bb.osmocom.org/trac/wiki/ProjectRationale>, 2012.
- [24] SAFFERLING, C. Terror and law. *Journal of International Criminal Justice* 4, 5 (2006), 1152–1165.
- [25] SAUTER, M. *Grundkurs mobile Kommunikationssysteme : von UMTS, GSM und GRPS zu Wireless LAN und Bluetooth Piconetzen*. Vieweg, 2006.
- [26] SCOURIAS, J. Overview of gsm: The global system for mobile communications. *University of Waterloo* (1996).

- [27] SECURITY, H. Imsi-catcher für 1500 euro im eigenbau. <http://www.heise.de/security/meldung/IMSI-Catcher-fuer-1500-Euro-im-Eigenbau-1048919.html>, 2010.
- [28] TELECOMMUNICATION STANDARDIZATION SECTOR OF ITU. Intelligent network. *SERIES Q: Switching and Signaling Q1200*, 7 (1997).
- [29] TELECOMMUNICATION STANDARDIZATION SECTOR OF ITU. List of mobile country or geographical area codes, 2010.
- [30] WEHRLE, D. Open source imsi catcher.
- [31] WIKIPEDIA. Cell id. <http://bb.osmocom.org/trac/wiki/MotorolaC123>, 2012.
- [32] WIKIPEDIA. Equipment identity register. <http://de.wikipedia.org/wiki/IMSI-Catcher>, 2012.
- [33] WIKIPEDIA. Equipment identity register. http://en.wikipedia.org/wiki/Central_Equipment_Identity_Register, 2012.

Appendix A.

GSM

A.1. Interfaces

The following table contains a brief description of the interfaces used inside a GSM network. On the upper part the interfaces for the Network Subsystem are listed and on the lower part the interfaces for the Base Station Subsystem can be found.

Name	Between	Function
<i>A</i>	MSC ↔ BSS	BSS management data for Mobility Management and Call Control
<i>B</i>	MSC ↔ VLR	MSC receives data about MSs in the current area and sends data from Location Updates
<i>C</i>	MSC ↔ HLR	MSC can request routing data during call setup and send e.g. charging information
<i>D</i>	HLR ↔ VLR	Exchange of location-dependent subscriber data and updating the HLR (MSRN etc.)
<i>E</i>	MSC ↔ MSC	Executing a Handover when subscriber changes to a new MSC
<i>F</i>	MSC ↔ EIR	Checking white-/grey- and blacklists before giving access to the network
<i>G</i>	VLR ↔ VLR	Connects VLR of different MSCs to exchange subscriber data during a handover
<i>A_{bis}</i>	BSC ↔ BTS	BSC receives data from MS via the BTS
<i>U_m</i>	BTS ↔ MS	Registration procedure, call data etc. as well as broadcast information about the network and the base station

Table A.1.: Interface found in the GSM network.

A.2. Channel Combinations

The following table contains the possible combinations of channels inside the different Multiframes. The respective frame type is also indicated in the lower part of the table.

	M1	M2	M3	M4	M5	M6	M7	M8	M9
TCH/F	■							■	■
TCH/H		■	■						
TCH/H			■	■	■	■			
BCCH				■	■	■	■		
FCCH				■	■	■			
SCH				■	■	■			
CCCH				■	■	■	■		
SDCCH				■	■	■	■		
SACCH	■	■	■				■	■	■
FACCH	■	■	■				■	■	■
Multiframe Type	26	26	26	51	51	51	51	26	26

Table A.2.: Possible mappings of channels onto Multiframes

Appendix B.

OsmocomBB

This section contains general information about how to operate and setup the OsmocomBB framework and the Motorola C123.

B.1. Installation

The environment used for this project was a Thinkpad X220 Tablet running Xubuntu Linux 11.10. The instructions should work for any other distribution of the Ubuntu product palette.

1. Build libraries must be installed on the operating system to enable compiling libraries.

```
sudo apt-get install libtool shtool autoconf git-core  
pkg-config make gcc wget
```

2. The GNU Arm cross compiler toolchain needs to be installed so the firmware for the Motorola C123 can be built. It will be added as a repository to `sources` so it can be easily removed if it is not required any more.

```
sudo add-apt-repository ppa:bdrung/bsprak  
sudo apt-get update  
sudo apt-get install arm-elf-toolchain
```

3. The source code needs to be obtained. This can be either done by checking out the latest version of the framework from the developers, or by using the code on the CD.

```
git clone git://git.osmocom.org/osmocom-bb.git
```

4. At this point some firmwares had build errors, therefore we will compile only the firmware for the Calypso board used by the Motorola C123. This constraint might not be necessary if a newer version of the framework is used. In the `src` directory of the OsmocomBB framework the build process can be started.

```
make BOARDS=compal_e88
```

5. If a new version of OsmocomBB is used, the extra code from this project must be included in the build. The three files `catcher.c`, `app_catcher.c` and `pch_scan.c` must be moved to `osmocom-bb/src/host/layer23/src/misc` and the `Makefile.am` must be edited to include the new code.

```
bin_PROGRAMS = bcch_scan ... cbch_sniff catcher pch_scan
catcher_LDADD = $(LDADD) -lm
catcher_SOURCES = ../common/main.c app_catcher.c \
catcher.c ../../../../gsmmap/geo.c
pch_scan_SOURCES = ../common/main.c pch_scan.c rslms.c
```

B.2. Usage

To use a program written in the framework, the Motorola C123 needs to be flashed with the custom firmware. This can be done with the `osmocon` application.

```
cd src/host/osmocon
sudo ./osmocon -p /dev/ttyUSB0 -m c123xor
../../../../target/firmware/board/compal_e88/layer1.compalam.bin
```

After `osmocon` is started and running any application can be started with root privileges.

```
cd ../layer23/src/misc/
sudo ./catcher
```

The `pch_scan` program requires an ARFCN as an input. For example, to conduct a scan on the PCH of ARFCN 127 one would call:

```
sudo ./pch_scan -a 127
```


B.3. Serial Cable Schematics

A T191 unlock cable used to connect the Motorola C123 can either be obtained by ordering it from one of the mentioned stores or by building it from scratch. These are the schematics required for building the unlock cable taken from a GSM Blog ¹, which features images of many more cables for different brands.

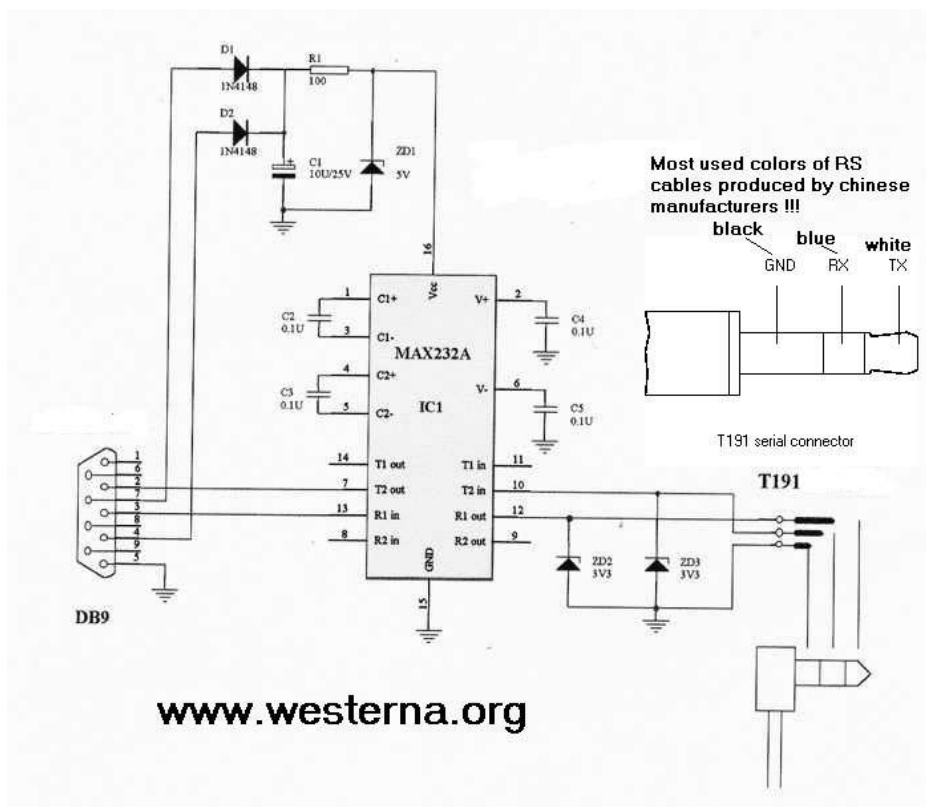


Figure B.1.: Serial cable schematics.

¹GSM Box Schematics, <http://gsmringtonefree.blogspot.de/> [Online; Accessed 05.2012]

Appendix C.

IMSI Catcher Detection System

This section will cover some code related topics of the ICDS.

C.1. Extentions

Rules, evaluators and filters are implemented in a way that new modules can be added quickly by way of inheritance and instantiating them in the constructor of the controller so they are known to the system. The following example shows how to implement a new rule and add it to the system. This exemplary process is nearly the same for filters and evaluators.

At first this base class has to be derived.

```
class Rule:
    #set whether the rule should be used by the
    #controller
    is_active = False
    #string that will identify the rule in the report
    identifier = 'Rule'

    #the logic of the rule, will be called by controller
    def check(self, arfcn, base_station_list):
        return RuleResult.CRITICAL
```

The new rule class needs to override the check method to do something meaningful. The identifier should also be set to a proper value.

```
class MyRule (Rule):
    identifier = 'My own Rule'
    def check(self, arfcn, base_station_list):
        result = RuleResult.CRITICAL
        #do some logic here and set result
        return result
```

arfcn and base_station_list are given to the check method by the controller. The first parameter is the ARFCN of the base station to which the evaluation will be applied. The second one is a list of all the base stations with complete information as far as it has been obtained by the ICDS. After it has been implemented it can be instantiated and added to the list of active rules in the constructor of the controller.

```
class PyCatcherController:
    ...
    def __init__ (self):
        ...
        self.my_rule = MyRule()
        self.my_rule.is_active = True
        self._rules.add(self._my_rule)
        ...
```

C.2. Example Configuration

This example configuration has been used for the evaluation in the Freiburg area.

```
#Core Configuration -----

#Settings for the Motorola C123 .
Device_settings = { 'mobile_device' : '/dev/ttyUSB0',
                    'xor_type' : 'c123xor',
                    'firmware' : 'compal_e88',
                    }

#Location of the osmocom library.
Osmocon_lib = '''/home/tom/imsi-catcher-detection/Src/
osmolib/src'''

#Generates commands from location and device settings.
#Does normally not have to be edited.
Commands = {'osmocon_command' : [Osmocon_lib +
    '/host/osmocon/osmocon',
    '-p', Device_settings['mobile_device'],
    '-m', Device_settings['xor_type'],
    Osmocon_lib + '/target/firmware/board/'
    + Device_settings['firmware']
    + '/layer1.compalram.bin'],
    'scan_command' : [Osmocon_lib
    + '/host/layer23/src/misc/catcher'],
    'pch_command' : [Osmocon_lib
    + '/host/layer23/src/misc/pch_scan'],
    }

#Rules Configuration -----

#A list of providers that should be taken as legitimate.
Provider_list = ['T-Mobile', 'O2', 'Vodafone', 'E-Plus']

#-----Continues on next page-----
```

Appendix C. IMSI Catcher Detection System

```
#Countries where the given providers have presence.
Provider_Country_list = {
    'T-Mobile' : 'Germany',
    'O2' : 'Germany',
    'Vodafone' : 'Germany',
    'E-Plus' : 'Germany'
}

#Comma separated list of LACs that can be observed in the
#given area.
LAC_mapping = {
    'T-Mobile' : [21014,21015],
    'O2' : [50945],
    'Vodafone' : [793],
    'E-Plus' : [138,588]
}

#Frequency intervals that are registered to the
#given providers.
ARFCN_mapping = {
    'T-Mobile' : [(13,49), (81, 102), (122,124), (587,611)],
    'O2' : [(0,0), (1000,1023), (637,723)],
    'Vodafone' : [(1,12), (50,80), (103,121), (725,751)],
    'E-Plus' : [(975,999), (777,863)]
}

#How much % the LAC of a base station can deviate from
#the median before throwing an error (range 0 to 1 where
#0 means no tolerance).
LAC_threshold = 0

#How much % the rx level is allowed to be away from the
#interval located in the Location Area Database
DB_RX_threshold = 0.05

#How much % the rx is allowed to change during the course
#of a scan.
CH_RX_threshold = 0.02

#-----Continues on next page-----
```

```
#How much Pagings per 10s are required to give an Ok  
#rating  
Pagings_per_10s_threshold = 20  
  
#How many hopping assignments are required to give  
#an Ok rating  
Assignment_limit = 0  
  
#PCH Parameters -----  
  
#How often a failed PCH scan should retry  
PCH_retries = 5  
  
#Time the PCH is scanned during Operation in  
#User Mode  
USR_timeout = 15  
  
#Evaluator Configuration -----  
  
Rule_Groups = []  
  
Rule_Weights = {}  
  
#Database Configuration -----  
  
#The API key for OpenCellID.  
#Can be freely obtained by registering on the web site.  
Open_Cell_ID_Key = 'd7a5bc3f21b44d4bf93d1ec2b3f83dc4'  
  
#Path to the folder where databases should be saved to or  
#loaded from. The ICDS will look in this folder if databa-  
#ses are available.  
Database_path = '''/home/tom/imsi-catcher-detection/Src  
/PyCatcher/Databases/'''
```


Appendix D.

System Information

The following pages contain parsed System Information Messages of type 1–4 for reference.

Appendix D. System Information

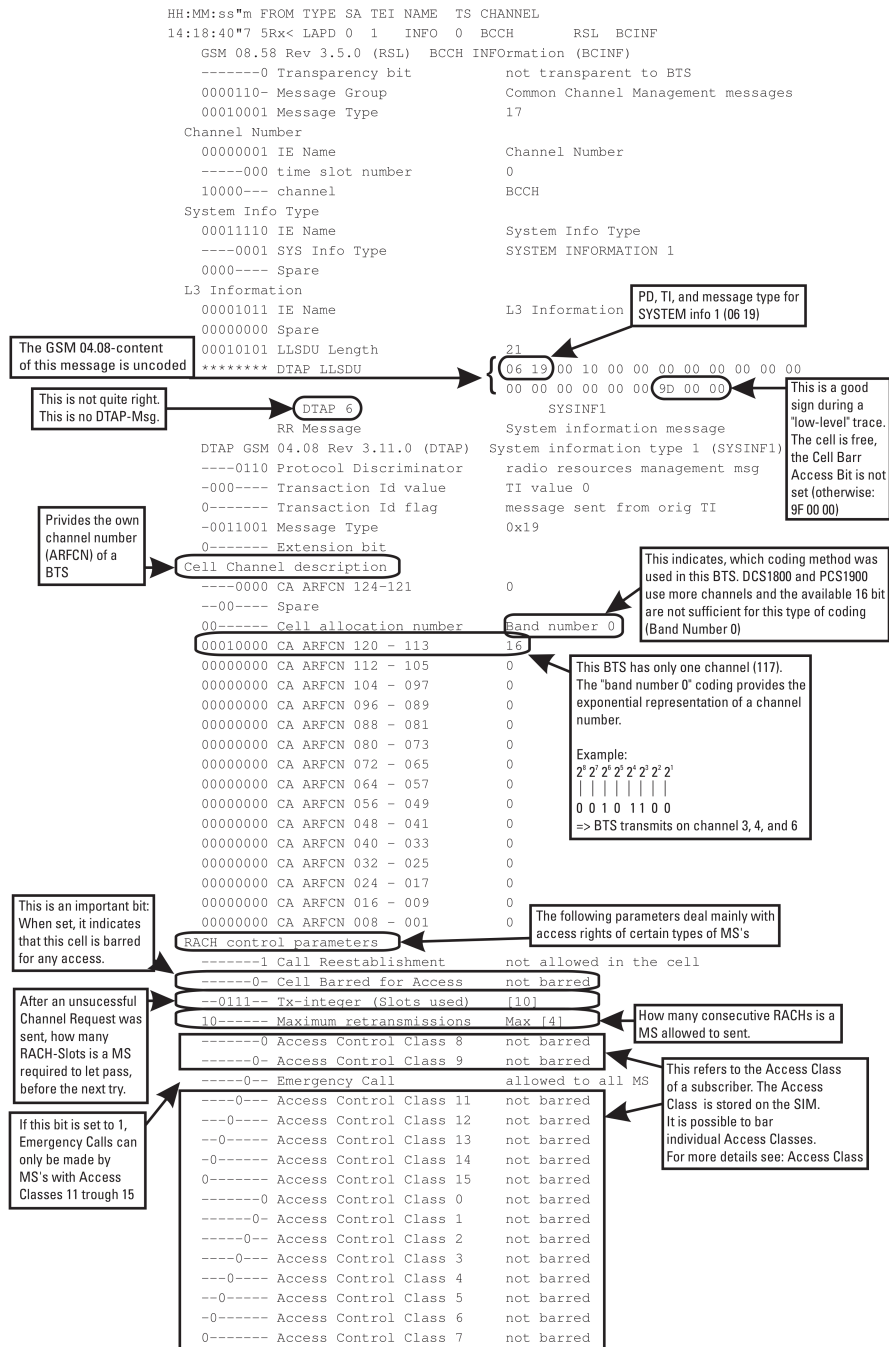


Figure D.1.: System Information 1 Message

Appendix D. System Information

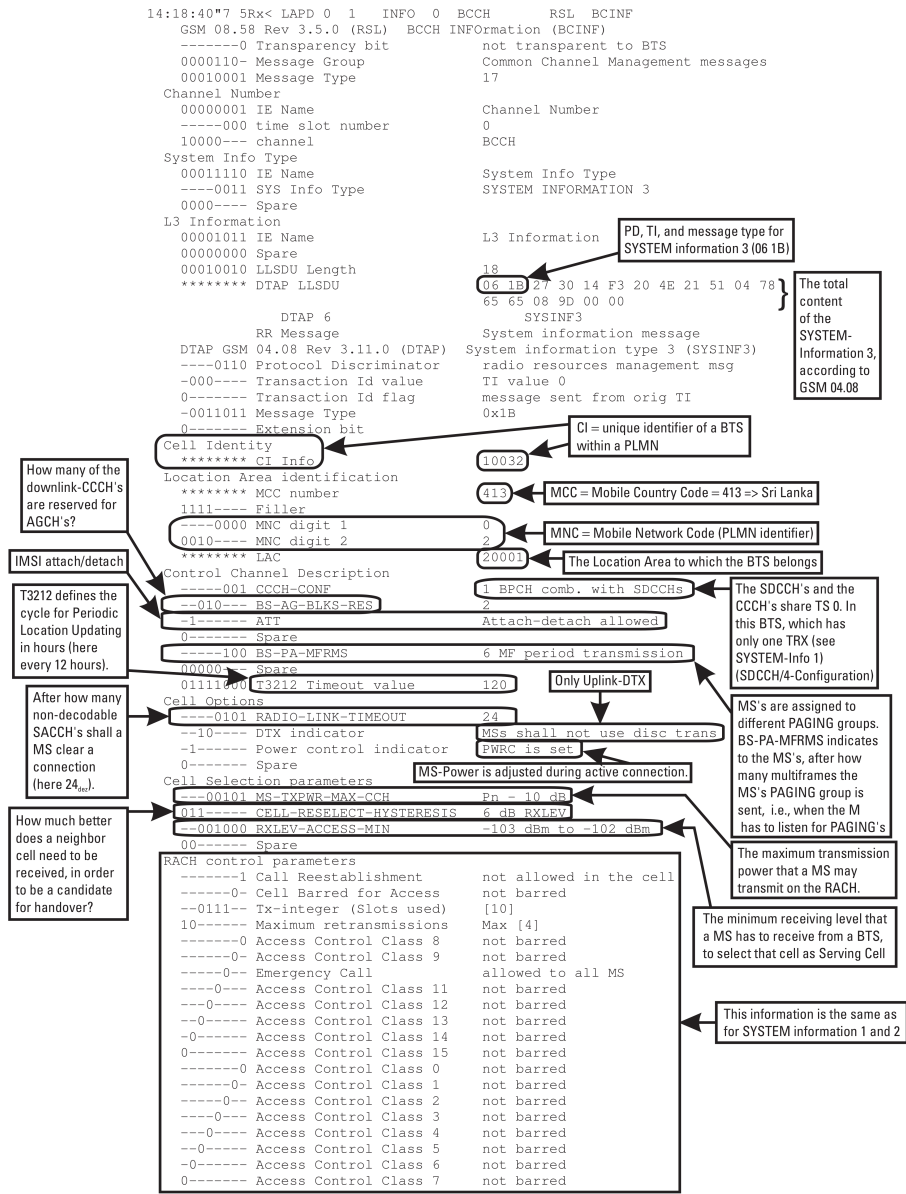


Figure D.3.: System Information 3 Message

```

14:18:40*7 5Rx< LAPD 0 1 INFO 0 BCCH RSL BCINF
GSM 08.58 Rev 3.5.0 (RSL) BCCH INFORMATION (BCINF)
-----0 Transparency bit not transparent to BTS
0000110- Message Group Common Channel Management messages
00010001 Message Type 17
Channel Number
00000001 IE Name Channel Number
----000 time slot number 0
10000--- channel BCCH
System Info Type
00011110 IE Name System Info Type
---0100 SYS Info Type SYSTEM INFORMATION 4
0000---- Spare
L3 Information
00001011 IE Name L3 Information
00000000 Spare
00001100 LLSDU Length 12
***** DTAP LLSDU 06 1C 14 F3 20 4E 21 65 08 9D 00 00 }
DTAP 6 SYSINF4
RR Message System information message
DTAP GSM 04.08 Rev 3.11.0 (DTAP) System information type 4 (SYSINF4)
---0110 Protocol Discriminator radio resources management msg
-000---- Transaction Id value TI value 0
0----- Transaction Id flag message sent from orig TI
-0011100 Message Type 0x1C
0----- Extension bit
Location Area identification
***** MCC number 413
1111---- Filler
---0000 MNC digit 1 0
0010---- MNC digit 2 2
***** LAC 20001
Cell Selection parameters
---00101 MS-TXPWR-MAX-CCH Pn - 10 dB
011----- CELL-RESELECT-HYSTERESIS 6 dB RXLEV
--001000 RXLEV-ACCESS-MIN -103 dBm to -102 dBm
00----- Spare
RACH control parameters
-----1 Call Reestablishment not allowed in the cell
-----0- Cell Barred for Access not barred
--0111-- Tx-integer (Slots used) [10]
10----- Maximum retransmissions Max [4]
-----0 Access Control Class 8 not barred
-----0- Access Control Class 9 not barred
-----0-- Emergency Call allowed to all MS
---0---- Access Control Class 11 not barred
--0----- Access Control Class 12 not barred
-0----- Access Control Class 13 not barred
-0----- Access Control Class 14 not barred
0----- Access Control Class 15 not barred
-----0 Access Control Class 0 not barred
-----0- Access Control Class 1 not barred
-----0-- Access Control Class 2 not barred
---0--- Access Control Class 3 not barred
--0---- Access Control Class 4 not barred
-0----- Access Control Class 5 not barred
0----- Access Control Class 6 not barred
0----- Access Control Class 7 not barred

```

PD, TI and message type for SYSTEM information 4 (06 1C).

The total content of the SYSTEM information 4, according to GSM 04.08.

This information on the Location Area is the same as in SYSTEM information 3.

This information on the Cell Selection Parameters is the same as in SYSTEM information 3.

This information is the same as for SYSTEM information 1, 2, and 3

Figure D.4.: System Information 4 Message

Appendix E.

Evaluation Data

E.1. Rx and LAC Change Test

The following table contains the four configuration that have been used to replace real base stations with the IMSI catcher.

	T-Mobile	O2	E-Plus	Vodafone
ARFCN	877	877	877	877
ShortName	T-Mobile	Vodafone	E-Plus	O2
MCC	262	262	262	262
MNC	01	02	03	07
LAC	666	4711	666	4711
Cell ID	1	1	1	1
Neighbours	—	—	—	—

Table E.1.: Configurations used for the rx /LAC Change Rules test.

E.2. Long Term Test

The following tables contain the configurations that have been used throughout the long term test period. The configurations have been used in the order they appear in the tables.

Acronyms

3GPP	Third Generation Partnership Project 6, 7, 28
AC	Authentication Center 11, 14, 16
AGCH	Access Grand Channel 20, 27
ARFCN	Absolute Radio Frequency Number 17, 18, 40, 42, 44, 47, 54, 55, 57, 67, 69, 70
ARIB	Association of Radio Industries and Businesses 6
ATIS	Alliance for Telecommunications Industry Solutions 6
BCC	Base Station Color Code 42
BCCH	Broadcast Channel 25–27, 39, 40, 51
BGS	Bundesgrenzschutz 32
BKA	Bundeskriminalamt 32
BMI	Bundesministerium des Inneren 32
BSC	Base Station Controller 16, 19, 20, 24, 28, 35, 40
BSIC	Base Station Identification Code 42
BSS	Basestation Subsystem 7, 8, 16, 19
BTS	Base Station Transceiver 16, 18–25, 28, 31, 39, 40, 42–45, 47, 52, 54, 55, 57, 62, 70
CC	Call Control 12, 28
CEPT	Conférence Européenne des Administrations des Postes et des Télécommunications 5
CI	Cell Identity 18, 19
CSV	Comma Separated Value 54
DCS1800	Digital Cellular System 1800 5
DIY	do-it-yourself 37
DTMF	Dual Tone Multi Frequency 9
EDGE	Enhanced Data Rates for GSM Evolution 7

Acronyms

EEPROM	Electrically Erasable Programmable Read-Only Memory 10
EIR	Equipment Identity Register 11
ETSI	European Communication Standards Institute 5, 6
FACCH	Fast Access Control Channel 21, 24, 26
FCCH	Frequency Correction Channel 25, 26, 40
FDMA	Frequency Division Multiple Access 21, 22
FN	Frame Number 40
GMSK	Gaussian Minimum Shift Keying 28
GPRS	General Packet Radio Service 7
GSM	Global System for Mobile Communications 1–3, 5, 7, 9, 10, 18, 21, 22, 29, 30, 35–38, 45, 51, 61, 65
HDLC	High Level Data Link Control 28
HLR	Home Location Register 11, 12, 14, 65
HNI	Home Network Identifier 11
HSDPA	High Speed Downlink Packet Access 7
HSPA	High Speed Packet Access 7
HSUPA	High Speed Uplink Packet Access 7
ICDS	IMSI Catcher Detection System 35, 38–40, 42, 43, 45, 47–52, 54, 55, 58, 61–65, 67–70, 73
IMEI	International Mobile Equipment Identifier 9, 28, 31, 58
IMSI	International Mobile Subscriber Identification 10–12, 14, 20, 27–33
IN	Intelligent Network Subsystem 8
ISDN	Integrated Services Digital Network 12, 28
ITU	International Telecommunication Union 7, 11, 27
Kc	Cyphering Key 10, 16, 20
Ki	Secret Key 10, 14, 16, 20
LA	Location Area 12, 14, 20
LAC	Location Area Code 42, 43, 47, 59, 67, 69, 70
LAI	Location Area Identifier 29, 42, 48, 57
LAPD	Link Access Procedure, D Channel 28
LAPD _m	LAPD Mobile 28

MCC	Mobile Country Code 10, 11, 42
ME	Mobile Equipment 9, 10, 19, 20, 36, 42, 47
MM	Mobility Management 12, 28
MNC	Mobile Network Code 10, 11, 42
MoU	Memorandum of Understanding 5
MS	Mobile Station 7–9, 14, 16, 19–21, 23, 25–32, 40, 42, 45, 49, 58, 64, 65, 69, 70
MSC	Mobile Switching Center 11, 12, 14, 16, 19, 20, 28
MSIN	Mobile Subscriber Identification Number 10, 11
MSISDN	Mobile Subscriber Integrated Services Digital Network Number 12, 14
MSRN	Mobile Station Roaming Number 14
MTP 2/SS7	Message Transfer Part 2/SS7 28
MVC	Model View Controller 51
NCC	Network Color Code 42
NMSI	National Mobile Subscriber Identity 11
NMT	Northern Telecommunication 5
NSS	Network Subsystem 7, 8, 11, 12, 20, 28
OMS	Operation and Maintenance Subsystem 8
Osmocom	Open source mobile communications 35
PCH	Paging Channel 20, 27, 49, 57, 58, 63
PIN	Personal Identification Number 10
PLMN	Public Land Mobile Network 9, 11, 12
PSTN	Public Standard Telephone Network 8, 11, 12
RACH	Random Access Channel 24, 25, 27
RR	Radio Resource 28
SACCH	Slow Access Control Channel 26
SCH	Signalling Channel 22, 23, 25, 26, 40
SCP	Service Control Point 8
SDCCH	Standalone Dedicated Control Channel 20, 26, 27
SF	Stealing Flag 24
SIM	Subscriber Identity Module 9, 10, 14, 16, 20, 30–32
SMS	Short Message Service 9
SMSC	Short Message Service Center 11
SS-7	Signaling System 7 28
STC	Sub Technical Committee 6

Acronyms

TACS	Total Access Communication System 5
TC	Type Code 40
TCH	Traffic Channel 20, 21, 26
TDMA	Time Division Multiple Access 22, 23, 25
TMSI	Temporary IMSI 14, 20, 27, 65
TRAU	Transcoding Rate and Adaption Unit 16, 65
TTA	Telecommunications Technology Association 6
TTC	Telecommunications Technology Committee 6
UMTS	Universal Mobile Telecommunications System 7, 16
USRP	Universal Software Radio Peripheral 64, 65
VAS	value-added service 8
VLR	Visitor Location Register 11, 14, 65
VoIP	Voice over IP 65